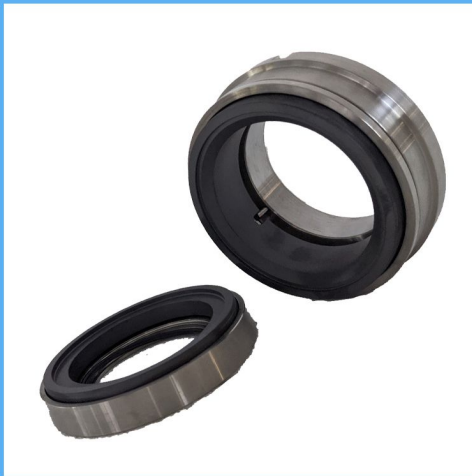


# RJC587

## Engineered Mechanical Seals

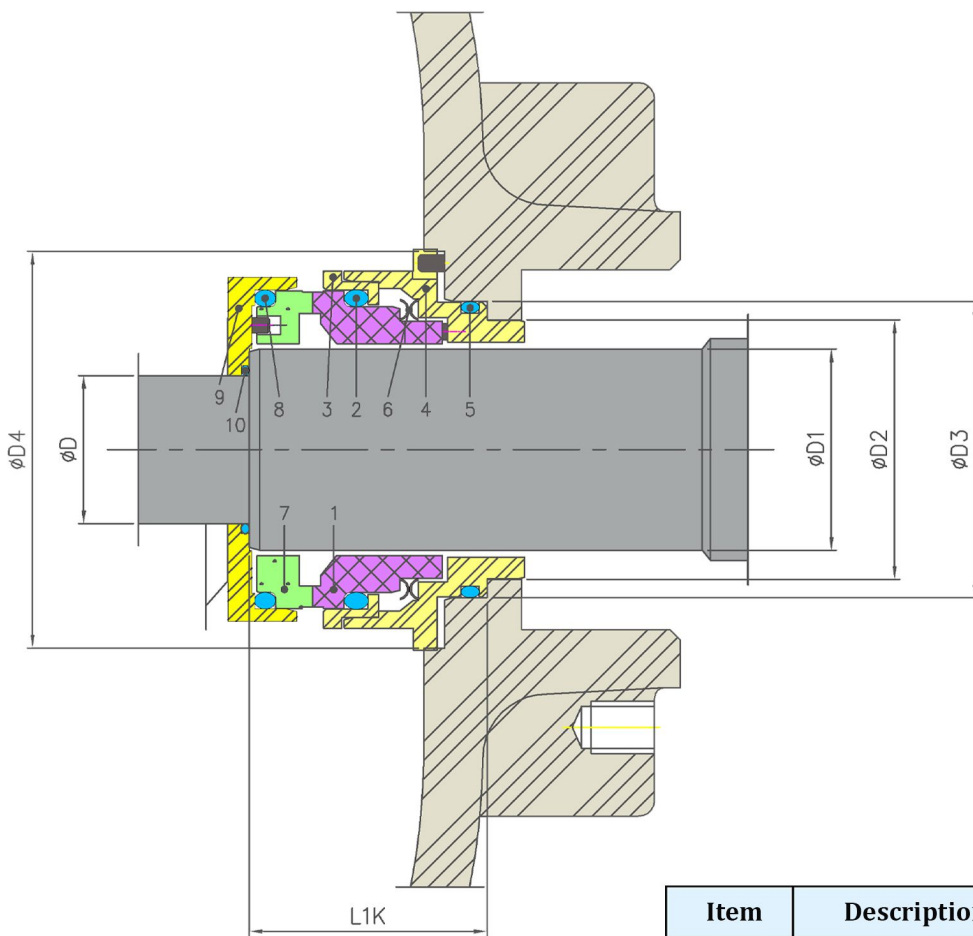


### Product Description

1. Single seal configuration
2. Balanced Design
3. Semi-Cartridge Design construction
4. Used in applications where limited space is available

### Technical Features

1. Solid faces are used
2. Stationary set of springs which are out of contact prevent clogging
3. Wave Spring is used which takes less space and prevents clogging.
4. Designed to suit Andritz S Model Pumps
5. Stationary face takes drive from impeller



### Industrial Application

Paper and pulp industries  
Used in Paper Machine section.

### Material Of Construction

**Seal Face:** Carbon Graphite Antimony Impregnated/Carbon Graphite Resin Impregnated/Silicon - Carbide/Tungsten - Carbide

**Seat:** Carbon Graphite Antimony Impregnated/Carbon Graphite Resin Impregnated/Silicon - Carbide/Tungsten - Carbide

**Elastomer:** Viton / Aflas / TTV / EPRM

**Metal Parts:** S.S.316 / Hast'C / Alloy C-276

Note: Other MOC Combinations On Request

### Available Sizes

38mm, 48mm, 53mm, 65mm & 90mm

### Operating Limits

**Pressure** = 15 Kg/cm<sup>2</sup>)

**Temperature** = 120°C Max

**Speed** = 20m/s

**Permissible axial movement** = ±2.00mm

### Suitable for Pump Models

Suitable for Andritz S Model Pumps Series.

| Item     | Description |
|----------|-------------|
| 1        | Seal ring   |
| 2,5,8,10 | O ring      |
| 3        | Thurst ring |
| 4        | SR holder   |
| 6        | Wave Spring |
| 7        | Mating ring |
| 9        | MR holder   |