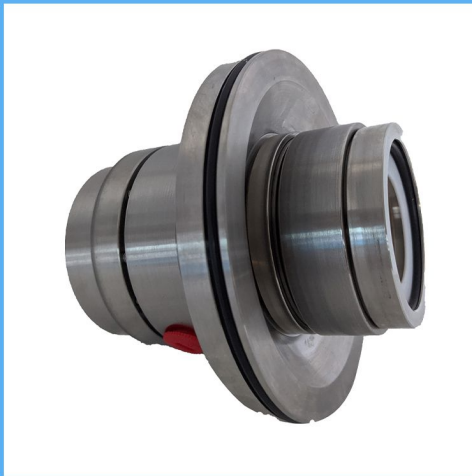


RJCS1-RJCS2

Engineered Mechanical Seals

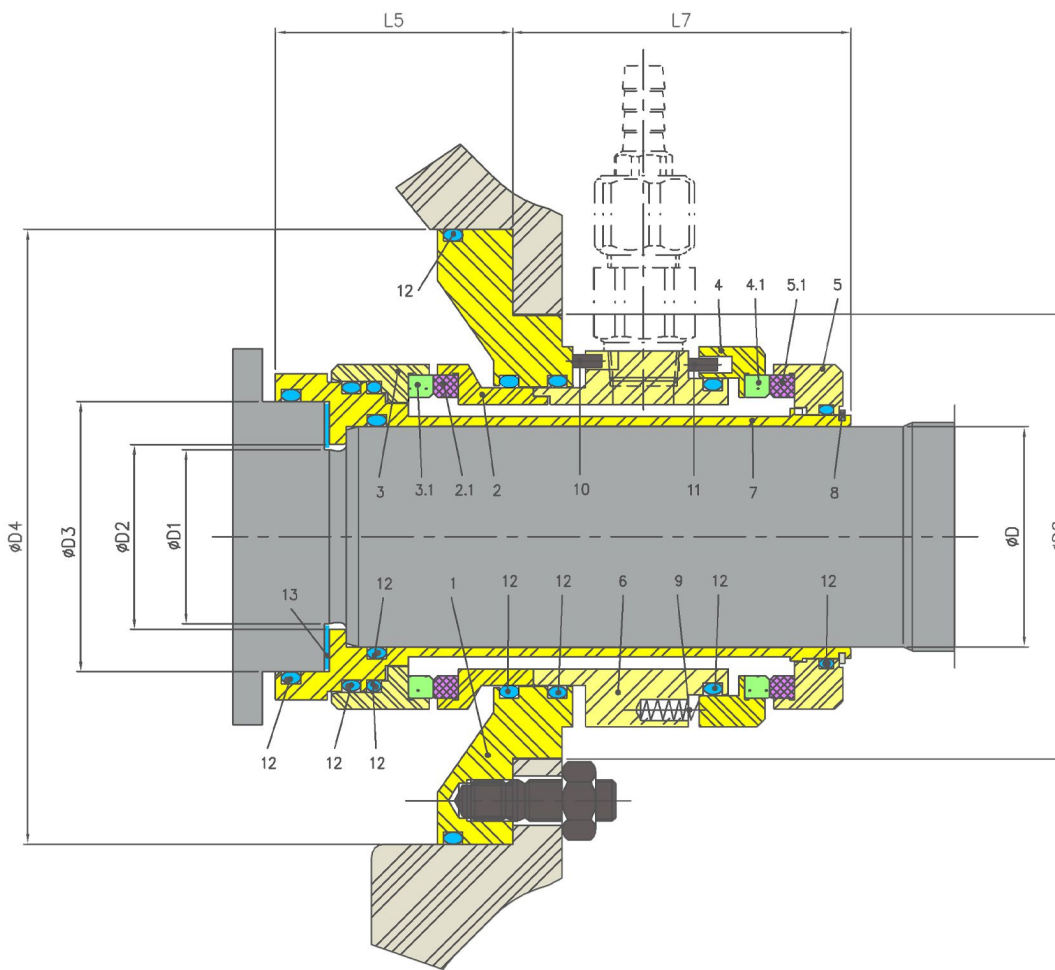


Product Description

1. Single & Double seal configuration available.
2. Balanced Design
3. Cartridge Design construction
4. Pump Specific Design

Technical Features

1. Heat Shrunken faces
2. Stationary set of springs which are out of contact prevent clogging
3. Milled anti-rotation slots prevent rolling of the body ring that protects the seal face. This eliminates tension peaks that would distort or break the seal face.
4. Special double-balanced design allows the use of both pressurised and unpressurised seal water.
5. The piston design permits free axial movement



Industrial Application

Paper and pulp industries
Effluent treatment plants
This seal is typically used in pumps for abrasive and environmentally hazardous liquids in cooking, evaporation, and causticising facilities in pulp mills.

Material Of Construction

Seal Face: Carbon Graphite Antimony Impregnated/Carbon Graphite Resin Impregnated/Silicon Carbide/Tungsten Carbide
Seat: Carbon Graphite Antimony Impregnated/Carbon Graphite Resin Impregnated/Silicon Carbide/Tungsten Carbide
Elastomer: Viton / Aflas / TTV / EPDM
Metal Parts: S.S.316 / Hast'C / Alloy C-276
Note: Other MOC Combinations On Request

Available Sizes

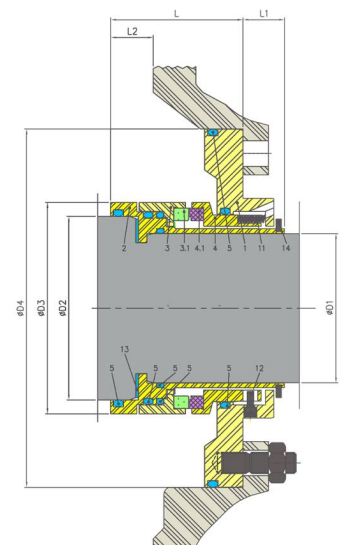
33mm, 43mm, 53 mm, 60 mm, 70 mm, 85 mm & 115 mm

Operating Limits

Pressure = 15 Kg/cm²
Temperature = 180°C Max
Speed = 20m/s
Permissible axial movement = ±2.00mm

Suitable for Pump Models

Andritz ACP Pump Series



Item	Description
1	Gland Plate
2,4	Primary ring (IB&OB)
2.1,4.1	Face
3.5	Mr Holder
3.1,5.1	Face
6	Position ring

Item	Description
10	Sleeve
8	Snap ring
9	Spring
10,11	Pin
12	O ring
13	Gasket