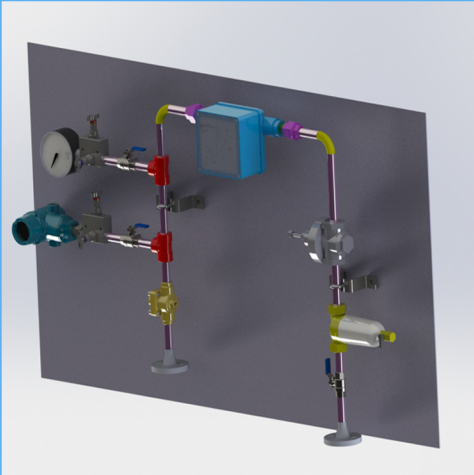


API PLAN 72,74

Seal Support System

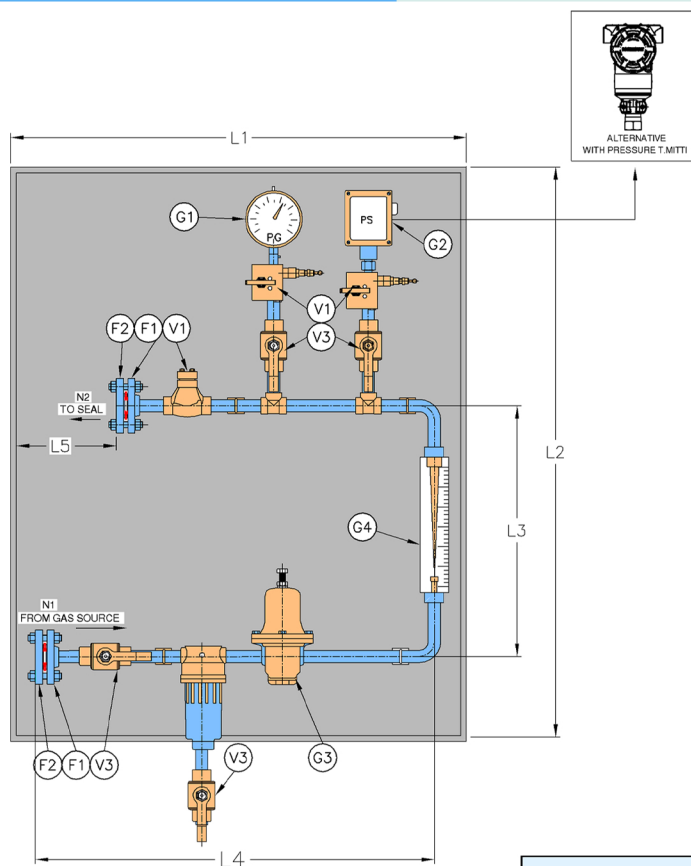


Product Description

API Plan 72/74 consists of filter, pressure control valve, pressure transmitter, flow-transmitter, check valve and pipe-fittings.

Objective

- 1.API Plan 72 used on arrangement 2 unpressurised dual seals that uses a dry running containment Seal
- 2.The buffer gas in API Plan 72 can be used to sweep the inner-seal leakage away from the outer seal to a collection system either to a reservoir or to flare line
- 3.If leakage from inner seal is gas, the buffer gas will dilute the leakage and will reduce the leakage emission from the containment seal.



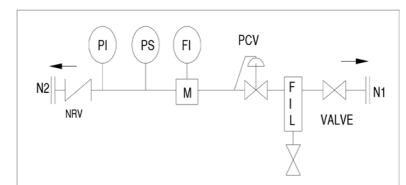
Advantages

- 1.Life of containment Seal is enhanced
- 2.Leakage is effectively routed to either liquid collect reservoir on flare line

Technical Features

- 1.A coalescing filter removes any particle and liquid that might be present
- 2.A forward pressure control valve which is set at plan 75 or plan 76 alarm point or at least 0.4 bar above normal flare pressure
- 3.A pressure transmitter to ensure required pressure of the gas to reach the seal faces
- 4.The flow transmitter will display the gas flow and will alarm on exceeding the flow
- 5.API Plan 74 uses the same feature except that they are used on arrangement 3 seals. Barrier gas is maintained at 1.7 bar greater than the seal chamber pressure. It is equivalent to traditional plan 54 liquid barrier system.

Schematic Diagram



Flanges

F1	Flange
F2	Blind Flange

Valves

V1	Two way Manifold valve
V2	Check Valve
V3	Ball Valve

Instruments & Gauges

G1	Pressure gauge
G2	Pressure Transmitter/Switch
G3	Pressure REg
G4	Flow Meter

Nozzle Schedule

Mark	Inlet (gas)
N1	Vent
N2	To Seal