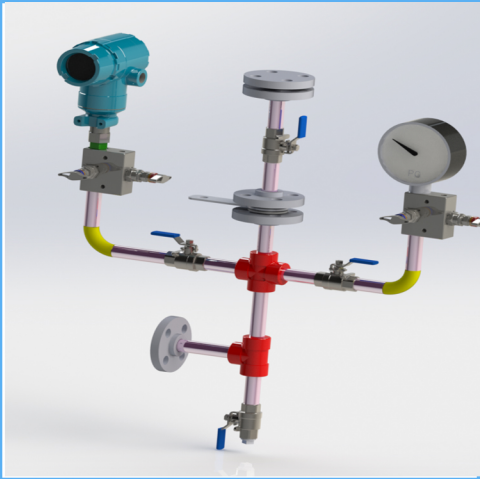


# API PLAN 76

## Seal Support System

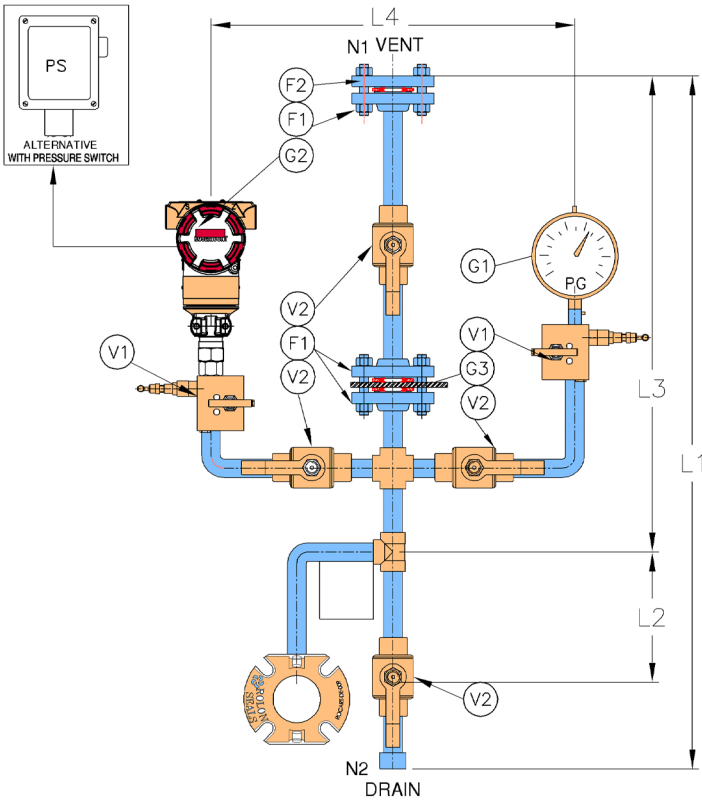


### Product Description

API Plan 76 consists of simple piping including pressure gauge, pressure transmitter, orifice plate.

### Objective

- 1.It is used to collect leakage for non-condensing liquid and route to flare line.
- 2.This plan is used if the pumped fluid does not condense at ambient temperature
- 3.They are used on arrangement 2 unpressurised dual seals, which also utilises a dry containment seal and where leakage from the inner seal is gas or vapour.



### Advantages

- 1.Least expensive
- 2.Ease of maintenance
- 3.Leakage is easily routed to vapor recovery system or flare system
- 4.Simples piping

### Technical Features

- 1.Tubing or piping shall be minimum ½” and shall rise continuously upward from the CSV Connection.
- 2.Leakage from the inner seal is restricted from escape by the containment seal and goes out of containment seal vent (CSV) Connection
- 3.An orifice plate in the piping restricts flow such that or high leakage of the inner seal will cause a pressure increase and trigger the pressure transmitter to alarm at 0.7 bar (g)
- 5.A drain connection on the piping may be used to inject nitrogen or other gas for the purpose of testing the containment seal.

Flanges	
F1	Flange
F2	Blind Flange

Valves	
V1	Two way Manifold valve
V2	Ball Vavle

Instruments & Gauges	
G1	Pressure gauge
G2	Pressure Transmitter/Switch
G3	Orifice-Plate

Nozzle Schedule	
Mark	Description
N1	Vent
N2	Drain