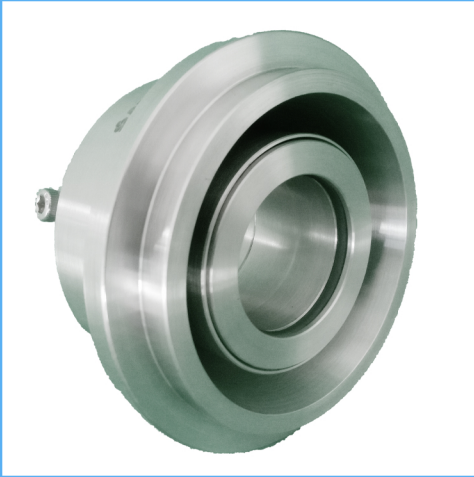


# RCSS Screw Pump

## Cartridge Seals

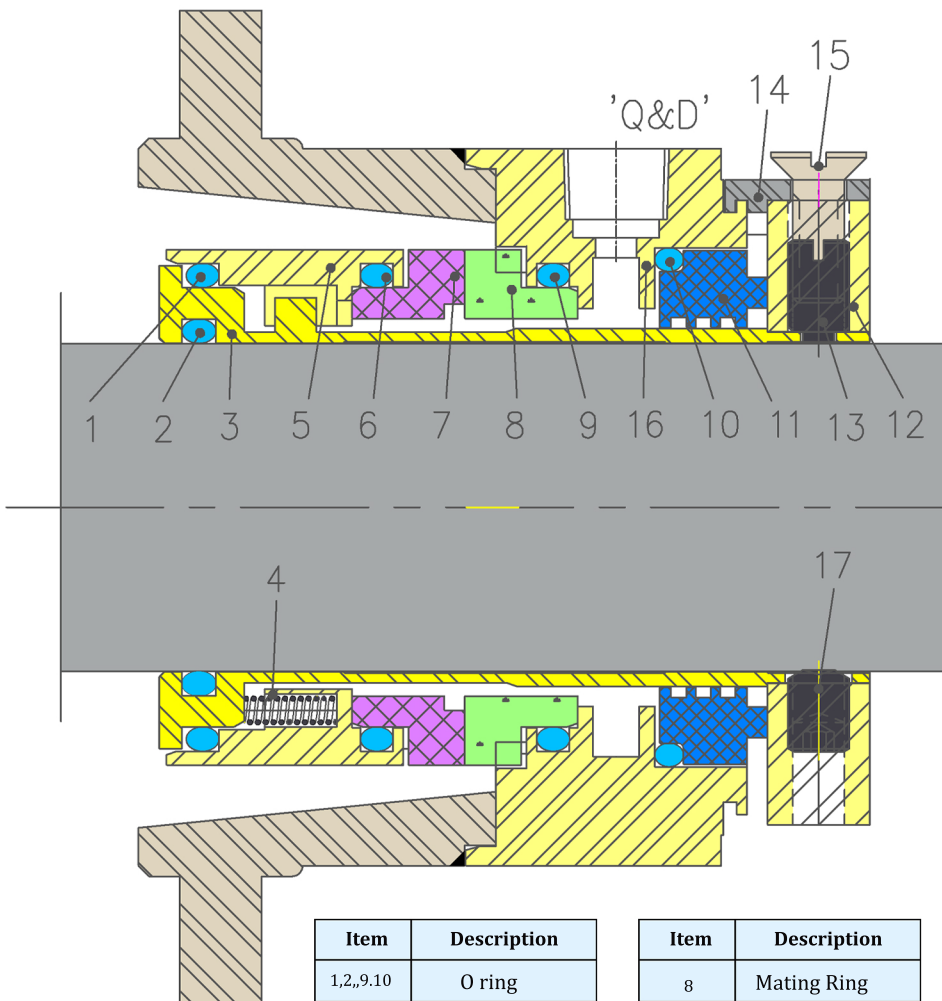


### Product Description

1. Single seal configuration
2. Balanced Design
3. Independent of Direction of Rotation.
4. Cartridge Design construction
5. Inside Mounted
6. Multi Spring rotation
7. Designed for screw Pumps

### Technical Features

1. Ideal for use in process pumps standardization
2. Cartridge unit factory assembled for easy installation
3. Rugged design for long operating life
4. Ideal to convert and retrofit pumps with packing and large OEM production.



Item	Description
1,2,9,10	O ring
3	Sleeve
4	Spring
5	Seal ring shell
6	O ring
7	Seal ring

Item	Description
8	Mating Ring
11	Restriction bush
12	Drive Collar
13	Dog point Screw
14	Holding clip
15	Socket HD Screw
16	Dog point Screw
17	Socket set pt screw

### Industrial Application

Food stuff and animal feed industries  
 Sweet cider pressing and beverage production  
 Viticulture and wineries  
 Spirit production and alcohol industry  
 Breweries and malt houses  
 Sugar industries  
 Pharmaceuticals and cosmetics industry  
 Oil and gas industries

### Material Of Construction

**Seal Face:** Carbon Graphite Antimony Impregnated/Carbon Graphite Resin Impregnated/Silicon - Carbide/Tungsten - Carbide  
**Seat :** Carbon Graphite Antimony Impregnated/Carbon Graphite Resin Impregnated/Silicon - Carbide/Tungsten - Carbide  
**Elastomer:** Viton / Aflas/TTV/EPDM/KALREZ  
 Perfluorocarbon rubber/PTFE  
**Metal Parts:** S.S.316/Hast'C

Note : Other MOC Combinations On Request

### Available Sizes

25mm to 100mm ( 1.000" to 4.000")

Note : Other Sizes On Request

### Operating Limits

**Pressure** = 25 Kg/cm2(MAX)

**Temperature** = -40°C to 220°C

**Speed** = 16m/s

**Permissible axial movement** =

d1 upto 100mm = ±0.5mm

d1 upto 100mm = ±2.0mm