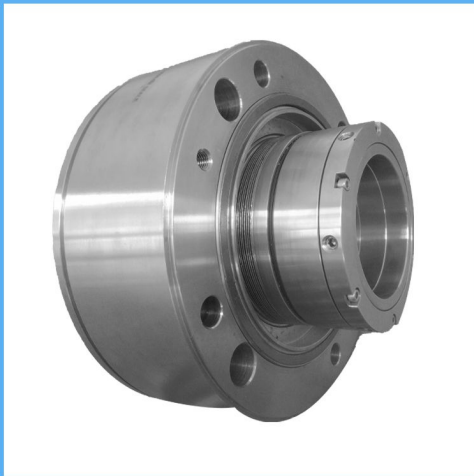


# RMBC Double Seals

## Cartridge Seals

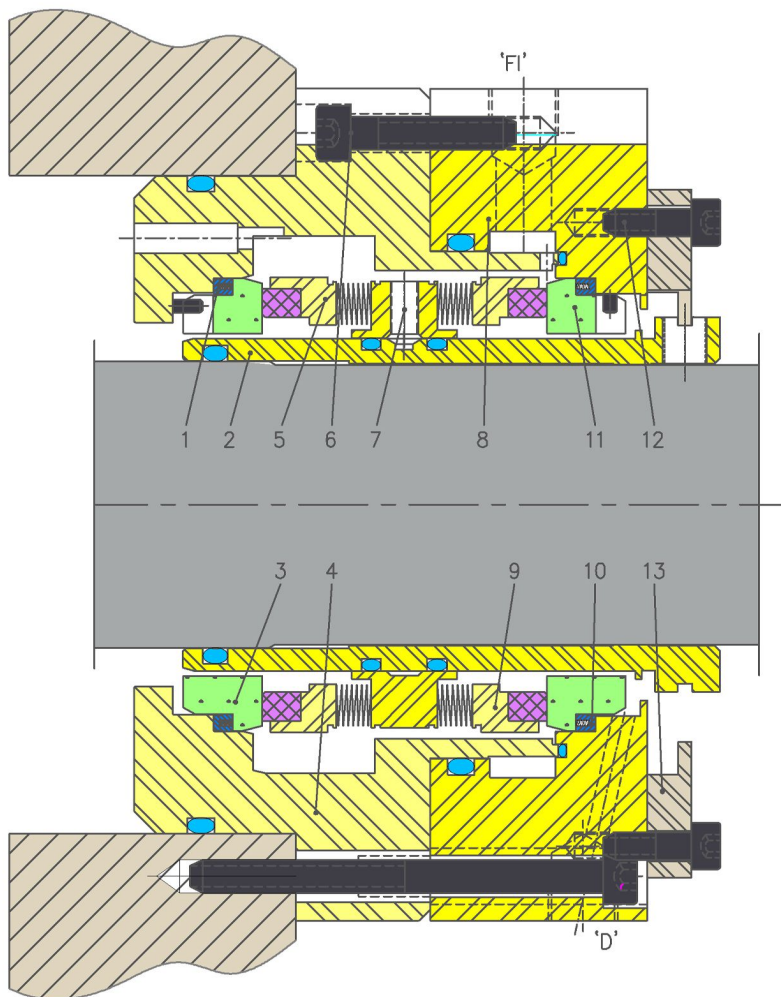


### Product Description

1. Edge Welded Metal Bellow Seals
2. Rotating Bellows
3. Unbalanced
4. Double Seal
5. Independent of Direction of Rotation

### Technical Features

1. For unstepped Shafts
2. Short Installation Length Possible
3. Self-Cleaning Effect
4. No Dynamically Loaded O-ring
5. For Extreme Temperature Ranges



### Industrial Application

- Refining Technology
- Power Plant Technology
- Cold Media
- Highly Viscous Media
- Chemical Industry
- Hot Media
- Pumps
- Special Rotating Equipment

### Material Of Construction

- Bellow :** Hastelloy C-276, Inconel AM350
- Seal Ring :** Carbon Graphite Antimony Impregnated
- Carbon Graphite Resin Impregnated/Silicon - Carbide/Tungsten - Carbide
- Seat:** Nitrile/EPDM/Viton/EBDM/KALREZ
- Metal Parts:** S.S.316/Alloy-20/Hast'C

Note : Other MOC Combinations On Request

### Available Sizes

24.0 to 150.0mm (0.94" to 6.000")

Note : Other Sizes On Request

### Operating Limits

- Pressure =** 25.0Kg/cm2 (MAX)
- Temperature =** -20°C...to +220°C
- Speed =** 20m/s
- Permissible Axial Movement =** ±0.5mm

Item	Description
1,10	Packing IB&OB
2	Sleeve
3,11	Mating Ring IB&OB
4	Aux gland
5,9	Seal ring IB&OB
6,12	Allen HD Screw

Item	Description
7	Socket set screw
8	Gland
13	Centering tabs