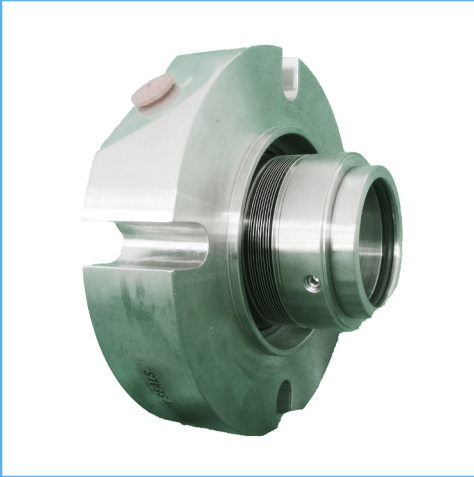


RMBC Single Seals

Cartridge Seals

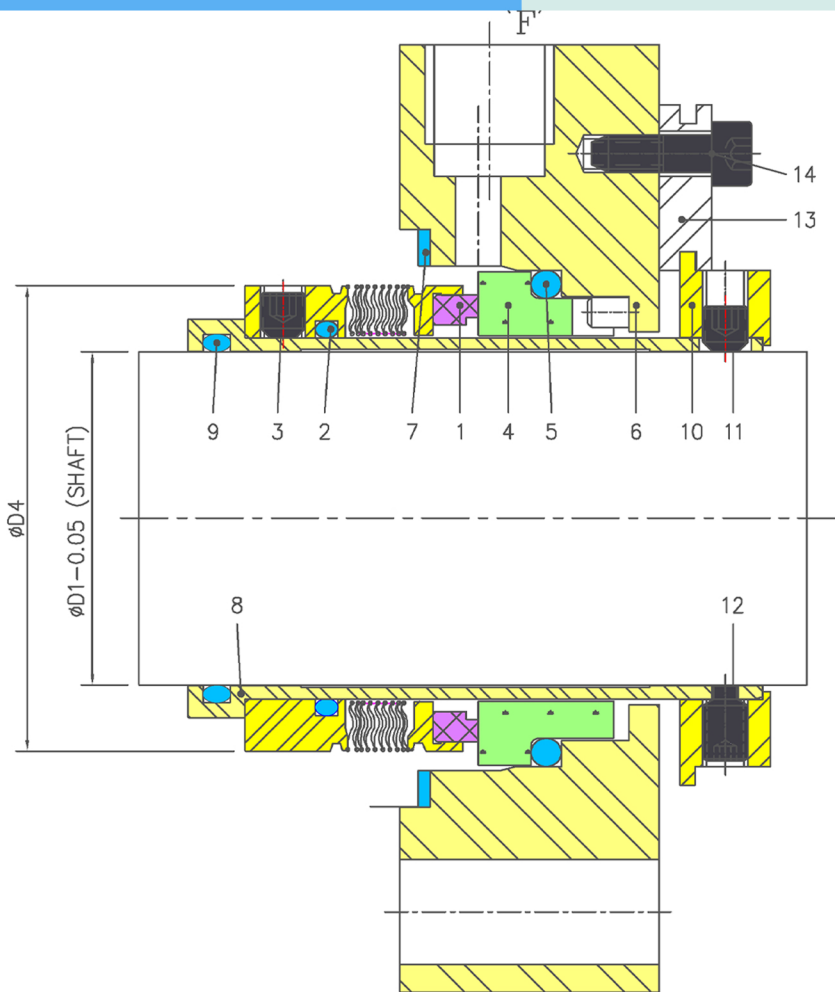


Product Description

1. Used for unstopped
2. Singel seal balanced Design
3. Independent of Direction of Rotation.
4. Cartridge Design construction
5. Metal bellows

Technical Features

1. Suitable for extreme temperature ranges
2. No dynamically loaded O-ring
3. Self cleaning effect
4. Short installation length is possible
5. Pumping screw for highly viscous media available.



Industrial Application

Refining Industries
 Power plant industries
 Chemical industry
 Hot media
 Cold media
 High viscous media
 Pumps
 Special rotating equipments

Material Of Construction

Seal Face: Carbon Graphite Antimony Impregnated/Carbon Graphite Resin Impregnated/Silicon - Carbide/Tungsten - Carbide
Seat : Carbon Graphite Antimony Impregnated/Carbon Graphite Resin Impregnated/Silicon - Carbide/Tungsten - Carbide
Elastomer: Viton / Aflas /EPDM/KALREZ
Metal Parts: S.S.316/Hast'C

Available Sizes

22mm to 75mm (0.875" to 3.000")

Operating Limits

Pressure = 25 Kg/cm² (MAX)
Temperature = -40°C to 220°C
Speed = 20 m/s
Permissible axial movement = d upto 100mm = ± 1.0 mm

Item	Description
1	Bellow assly
2,5,9	O ring
3,11	Socket set screw
4	Mating Ring
6	Gland plate
7	Gasket

Item	Description
8	Sleeve
10	Drive Collar
12	Dog point set screw
13	Sliding washer
14	Socket Cap Screw