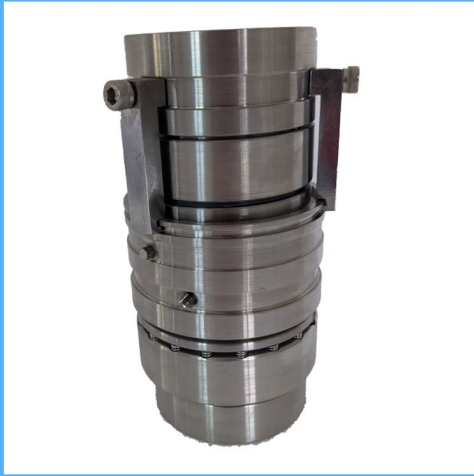


RSE2 (SLH)

Engineered Mechanical Seals

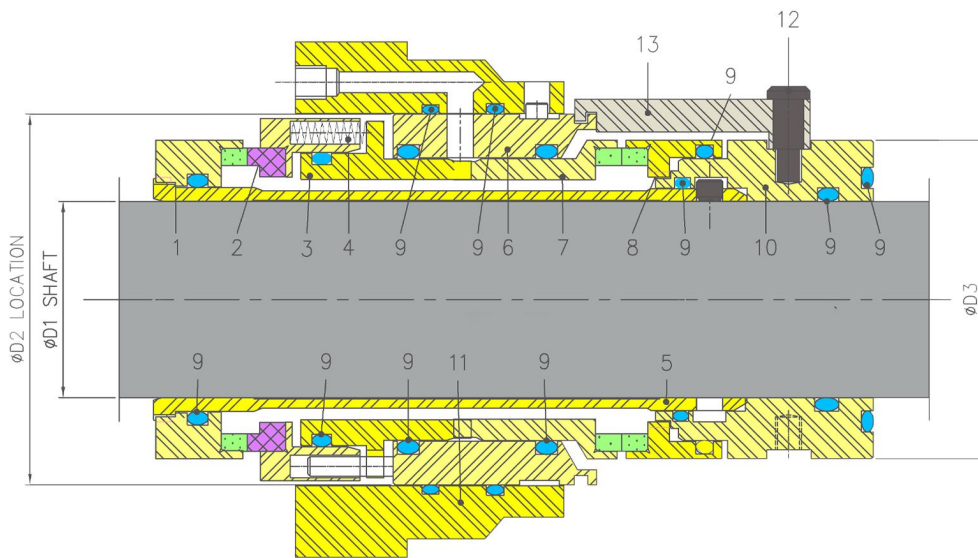


Product Description

1. Single & Double seal configuration available.
2. Balanced Design
3. Cartridge Design construction
4. Equipment Specific Design

Technical Features

1. Heat Shrunken faces
2. Stationary set of springs which are out of contact prevent clogging
3. Milled anti-rotation slots prevent rolling of the body ring that protects the seal face. This eliminates tension peaks that would distort or break the seal face.
4. Special double-balanced design allows the use of both pressurised and unpressurised seal water



Industrial Application

Paper and pulp industries
This seal is typically used in Side Entry Agitators

Material Of Construction

Seal Face :Carbon Graphite Antimony Impregnated / Carbon Graphite Resin Impregnated / Silicon Carbide / Tungsten-Carbide

Seat: Carbon Graphite Antimony Impregnated /Carbon Graphite Resin Impregnated/ Silicon-Carbide/ Tungsten-Carbide

Elastomer:Viton/Aflas/TTV/EPDM/KALREZ

Metal Parts: S.S.316/S.S.304/Hast'C

Note: Other MOC Combinations On Request

Available Sizes

45mm,58mm,77mm & 108mm

Operating Limits

Pressure = 15 Kg/cm²)

Temperature = 180°C Max

Speed = 20m/s

Permissible axial movement = ± 2.00 mm

Suitable for pump Models

Sulzer & Ahlstrom SL Series side entry Agitators

Item	Description
1,8	Mating ring
2,7	Seal ring
3	Pressure ring
4	Spring
5	Sleeve
6	Seal body
9	O ring
10	Intermediat Sleeve
11	Gland plate
12	Soc.HD Screw
13	Holding Clip