

RSAF (Pressure Screen) Engineered Mechanical Seals



Product Description

1. Double seal configuration.
2. Balanced Design
3. Cartridge Design construction
4. Equipment Specific Design

Technical Features

1. Heat Shrunken faces
2. Stationary set of springs which are out of contact prevent clogging
3. Milled anti-rotation slots prevent rolling of the body ring that protects the seal face. This eliminates tension peaks that would distort or break the seal face.
4. Special double-balanced design allows the use of both pressurised and unpressurised seal water.
5. Drive is taken from the Impeller of the Screen

Industrial Application

Paper and pulp industries
This seal is typically used in Pressure Screens and Pressure Thickeners

Material Of Construction

Seal Face: Carbon Graphite Antimony Impregnated/Carbon Graphite Resin Impregnated/Silicon -Carbide/Tungsten -Carbide

Seat: Carbon Graphite Antimony Impregnated/Carbon Graphite Resin Impregnated/Silicon -Carbide/Tungsten -Carbide

Elastomer: Viton / Aflas / TTV / EPRM

Metal Parts: S.S.316 / Hast'C / Alloy C-276

Note: Other MOC Combinations On Request

Available Sizes

55mm,60mm,70mm,75mm,90mm,110mm, 140mm, & 170mm

Operating Limits

Pressure = 15 Kg/cm²)

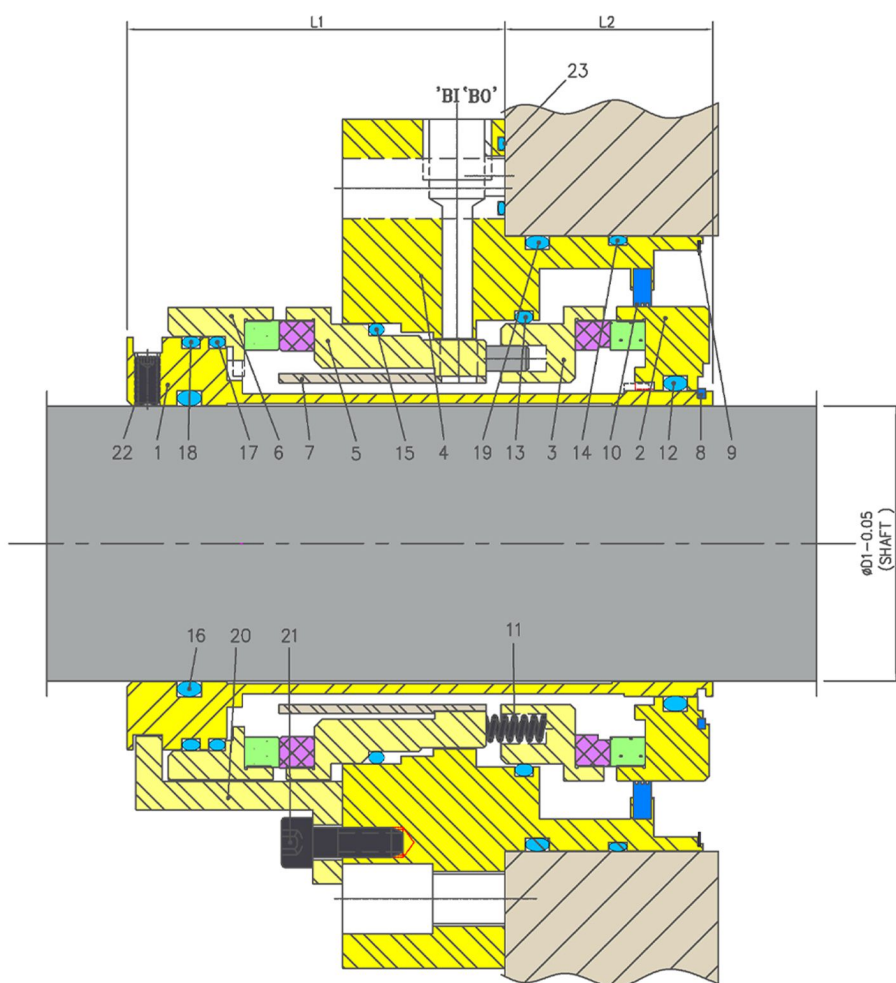
Temperature = 180°C Max

Speed = 20m/s

Permissible axial movement = ±2.00mm

Suitable for equipment Models

Paper screening equipment of popular makes across the globe



Item	Description
1	Sleeve
2,6	Mating ring IB&OB
3,5	Seal ring IB&OB
4	Gland
7	Guide Bush
8	Sleeve Circlip
9	Gland Circlip

Item	Description
10	Bush
11	Spring
12-19&23	O ring
20	Holding Clip
21	SocHD Screw
22	Soc.Set Screw