

# GVMS(GVMSB)

## Glasslined Agitator Seals

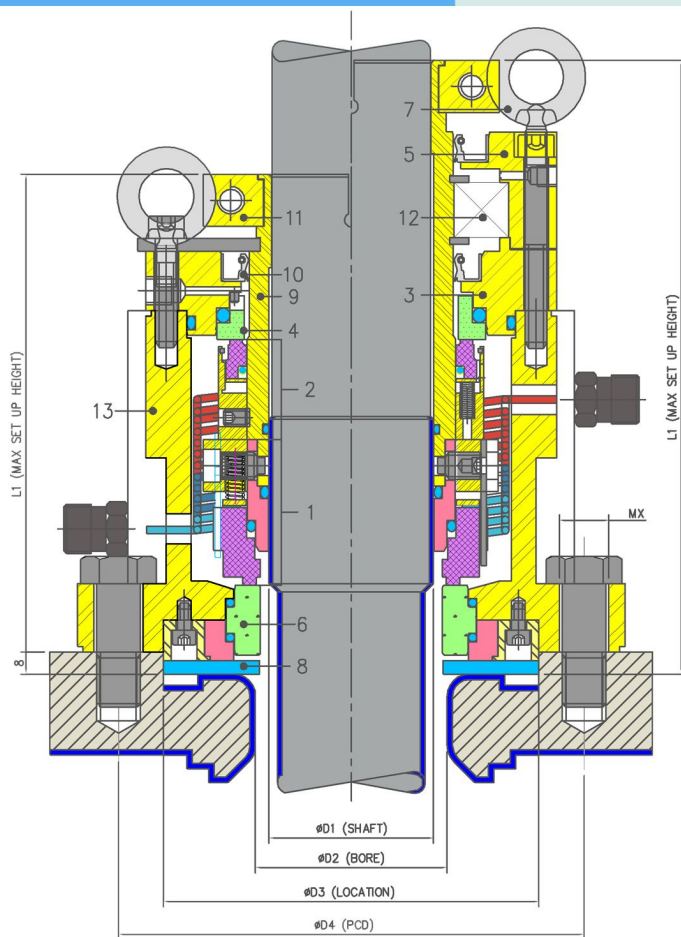


### Product Description

1. Double seal Configuration
2. Balanced Design
3. Independent of Direction of Rotation.
4. Cartridge Design construction
5. Top entry glass lined agitator seal

### Technical Features

1. Factory assembled for easy installation
2. Rugged design for long operating life
3. No dynamic O ring on shaft



### Industrial Application

Chemical Industry  
Pharmaceutical Industry

### Material Of Construction

**Seal Face** :Carbon Graphite Antimony Impregnated / Carbon Graphite Resin Impregnated / Silicon Carbide / Glass Filled Teflon

**Seat**: Carbon Graphite Antimony Impregnated / Carbon Graphite Resin Impregnated / Silicon-Carbide/ Tungsten-Carbide/Ceramic

**Elastomer**: Viton/Aflas/TTV/EPDM/KALREZ

**Metal Parts**: S.S.316 / Hast'C

Note : Other MOC Combinations On Request

### Available Sizes

25mm to 100mm ( 1.000" to 4.000")

Note : Other Sizes On Request

### Operating Limits

**Pressure** = 12 Kg/cm<sup>2</sup> (MAX)

**Temperature** = -40°C to 220°C

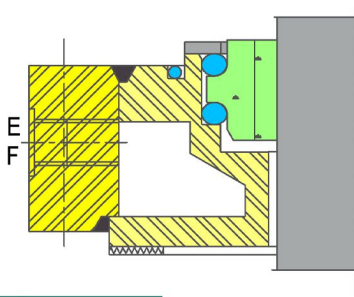
**Speed** = 300 rpm

**Permissible axil movement** : ± 0.3 mm

Item	Description
1	Rotary unit IB
2	Rotary unit OB
3	Top plate
4,6	MR(IB & OB)
5	Bearing block
7	Eye bolts

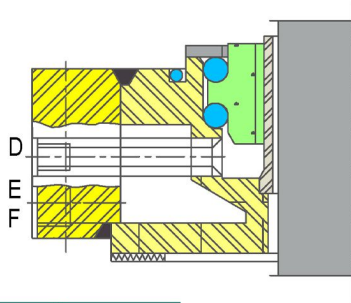
Item	Description
8	Spring washer
9	Sleeve
10	Oil seal
11	Drive collar
12	Bearing
13	Housing

## Installation, Details, Options



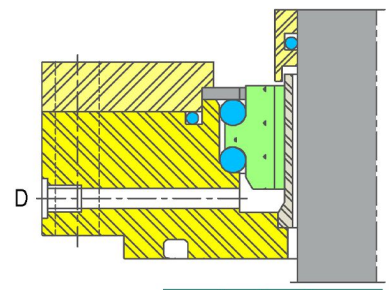
**Option-1**

Heat Trap Arrangement for Higher Temperature Applications



**Option-2**

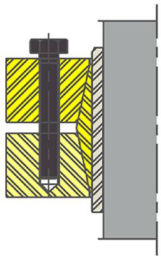
Heat Trap Arrangement + Debris Collector Can be used for higher Temperature\* for GMP



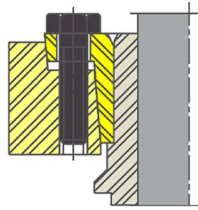
**Option-3**

Debris Collector Unit Can be used for GMP

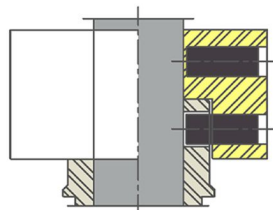
## Torque Transmissions



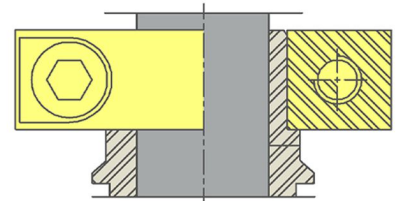
**3-Piece Shrink Disk**



**2-Piece Shrink Disk**



**Double Row Set Screw Drive Collar**



**Split Collar**

## Dimensional Data

								L1
D1	D2	D3	D4	D5	GVMS	GVMSB	MX	
40.00	50.00	114.00	145.00	38.00	185.00	210.00	M16	
50.00	60.00	126.00	155.00	48.00	185.00	220.00	M16	
60.00	70.00	137.00	170.00	58.00	185.00	225.00	M16	
80.00	90.00	167.00	200.00	78.00	215.00	240.10	M16	
100.00	110.00	203.00	270.00	98.00	215.00	255.00	M16	
125.00	135.00	220.00	295.00	120.00	230.00	281.35	M20	
140.00	150.00	313.00	350.00	135.00	230.00	289.13	M20	
160.00	170.00	313.00	350.00	150.00	230.00	305.00	M20	

Note: Additional technical & dimensional information will be provided on request