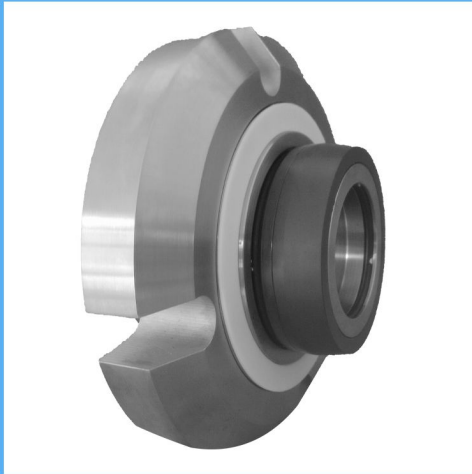


R510

Cartridge Seals

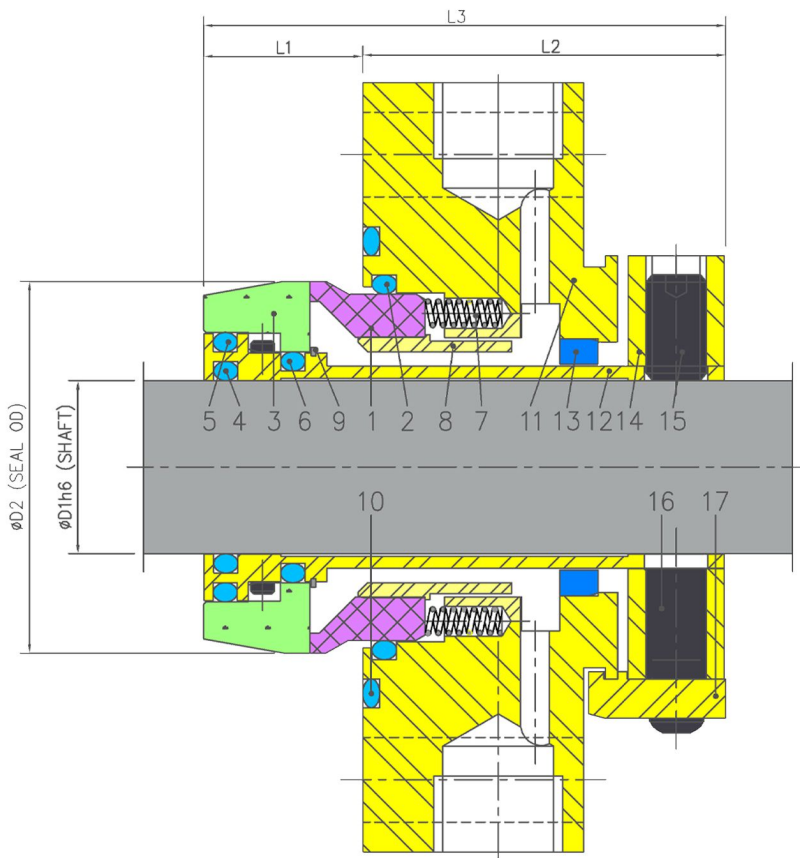


Product Description

1. Single seal configuration
2. Balanced slurry seal
3. Cartridge Design construction
4. Inside mounted multi spring pusher seal
5. Designed to handle highly corrosive toxic, and volatile liquids

Technical Features

1. Ideal for use in ANSI process pumps
2. Factory assembled cartridge design for easy Installation
3. Hydraulically balanced seal faces
4. Large radial clearances and non-clogging multi spring design



Industrial Application

ANSI process pumps
Mining and mineral ore Industry
Paper and pulp industry
Power generation industry
Textile industry
Water and waste water technology

Material Of Construction

Seal Face: Carbon Graphite Antimony Impregnated/Carbon Graphite Resin Impregnated/Silicon -Carbide/Tungsten - Carbide
Seat : Carbon Graphite Antimony Impregnated Carbon Graphite Resin Impregnated/Silicon - Carbide/Tungsten -Carbide
Elastomer: Viton / Aflas /TTV/EPDM/KARLEZ
Metal Parts: S.S.316 / Hast'C

Note : Other MOC Combinations On Request

Available Sizes

28mm to 150mm (1.125" to 6.000")

Note : Other Sizes On Request

Operating Limits

Pressure =17 Kg/cm2(MAX)

Temperature = -40°C to 177°C

Speed = 23m/s

Permissible axial movement = ±1.0

Item	Description
1	Seal ring
2,4,5,6,10	O Ring
3	Mating ring
7	Spring
8	Spring shroud
9	Circlip

Item	Description
11	Gland plate
12	Sleeve
13	Throttle Bush
14	Drive Collar
15	Socket Set Screw
16	Dog point screw

Item	Description
17	Centering tab
18	Soc. Hd Screw

Dimensional Data

D1					
INCH	MM	D2	L1	L2	L3
1.125	28.00	61.37	26.16	66.69	92.85
1.250	30 & 32	64.54	26.16	66.69	92.85
1.375	35.00	67.72	26.16	66.69	92.85
1.500	38.00	70.89	26.16	66.69	92.85
1.625	40 & 42	74.07	26.16	66.69	92.85
1.750	45.00	77.24	26.16	66.69	92.85
1.875	48.00	80.42	26.16	66.69	92.85
2.000	50.00	83.59	26.16	66.69	92.85
2.125	53.00	86.77	26.16	66.69	92.85
2.250	55.00	89.94	26.16	66.69	92.85
2.375	60.00	93.12	26.16	66.69	92.85
2.500	63.00	96.29	26.16	66.69	92.85
2.625	65.00	99.47	26.16	66.69	92.85
2.750	70.00	102.64	26.16	66.69	92.85
2.875	73.00	105.82	26.16	66.69	92.85
3.000	75.00	108.99	26.16	66.69	92.85
3.125	80.00	112.17	26.16	66.69	92.85
3.250	83.00	115.34	26.16	66.69	92.85
3.375	85.00	118.52	26.16	66.69	92.85
3.500	90.00	121.69	26.16	66.69	92.85
3.625	-	128.04	26.16	71.52	97.68
3.750	95.00	131.22	26.16	71.52	97.68
3.875	-	134.39	26.16	71.52	97.68
4.000	100.00	137.57	26.16	71.52	97.68
4.125	105.00	140.74	26.16	71.52	97.68
4.250	-	143.92	26.16	71.52	97.68
4.375	110.00	147.09	26.16	71.52	97.68
4.500	115.00	150.27	26.16	71.52	97.68
4.750	120.00	156.62	26.16	71.52	97.68
5.000	125.00	162.97	26.16	71.52	97.68
5.250	130 & 135	169.32	26.16	71.52	97.68
5.500	140.00	175.67	26.16	71.52	97.68
5.750	145.00	182.02	26.16	71.52	97.68
6.000	150.00	188.37	26.16	71.52	97.68

Note: Additional technical & dimensional information will be provided on request