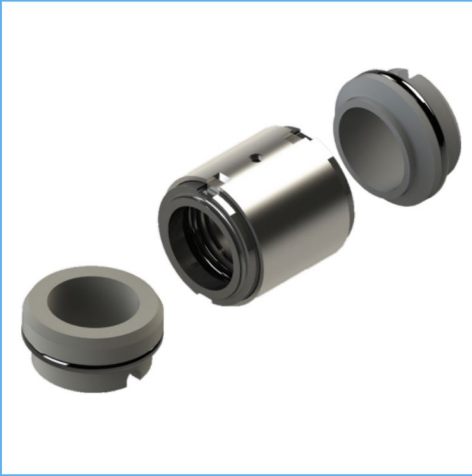


# RM74D

## Double Unblanced Pusher Seals

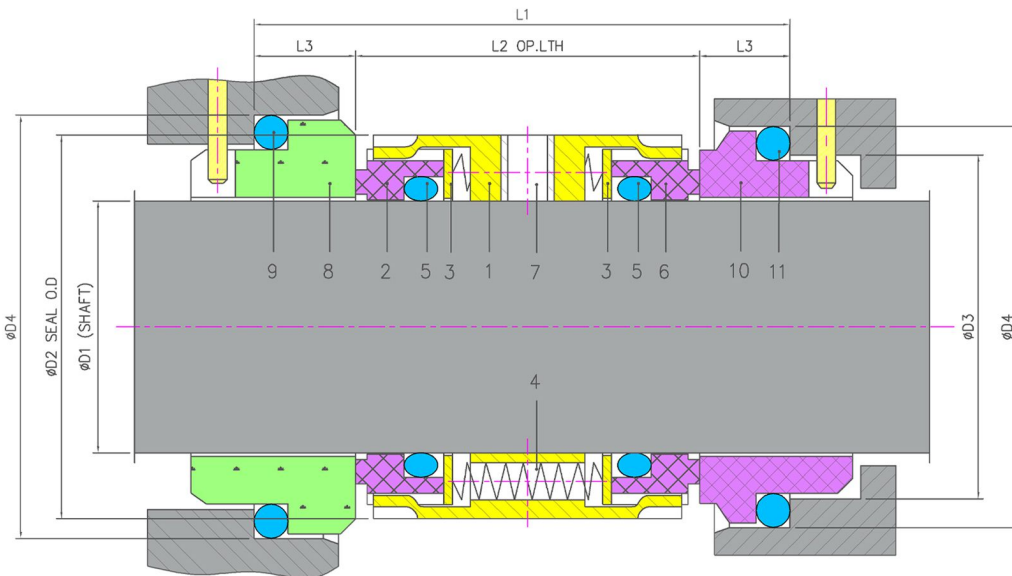


### Product Description

1. Dual seal configuration
2. Unbalanced Design
3. Independent of Direction of Rotation.
4. For plain shafts
5. Multiple or wave springs rotary construction
6. Sealing with FEP & Spring energized PTFE seals also available on request.

### Technical Features

1. Versatile torque transmission available
2. Pumping screw for media with higher viscosity also Available.
3. Short Installation length possible.
4. Can be employed for low solids content.
5. Multifaceted application usage



### Industrial Application

Adhesives  
 Chemical Industry  
 Low solid contents and low abrasive media  
 Process industry  
 Toxic and hazardous media  
 Chemical standard pumps

### Material Of Construction

**Seal Face:** Carbon Graphite Antimony Impregnated / Carbon Graphite Resin Impregnated / Silicon Carbide / Tungsten-Carbide  
**Seat:** Carbon Graphite Antimony Impregnated / Carbon Graphite Resin Impregnated / Silicon-Carbide/Tungsten-Carbide  
**Elastomer:** Viton/Aflas/TTV/ EPDM /KALREZ  
**Metal Parts:** S.S.316 / Hast'C

Note : Other MOC Combinations On Request

### Available Sizes

20mm to 200mm ( 0.750" to 8.000")  
 Note : Other Sizes On Request

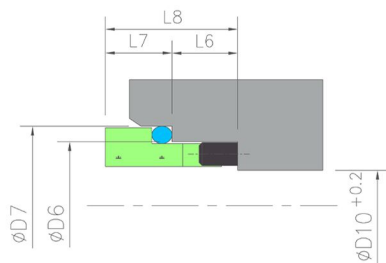
### Operating Limits

**Pressure** = 25.5 Kg/cm<sup>2</sup> )  
**Temperature** = -50°C to 220°C  
**Speed** = 20 m/s  
**Permissible axial movement** =  
 d1 upto 100mm = ± 0.5 mm  
 d1 from 100mm = ± 2.0 mm

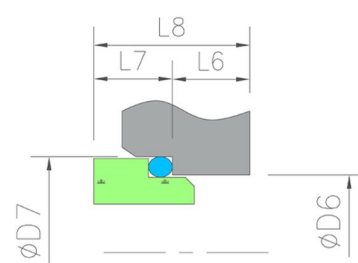
Item	Description
1	Cup
2,6	Seal Ring
3	Thrust washer
4	Spring IB

Item	Description
5	O ring
6	Seal ring OB
7	Set Screw

### Stationary Seats



DIN LONG MR



DIN SHORT MR

## Dimensional Data

D1	D2	D3	D4	L1	L2	L3
18.00	33.00	27.00	33.00	61.00	38.00	11.50
20.00	35.00	29.00	35.00	61.00	38.00	11.50
22.00	37.00	31.00	37.00	61.00	38.00	11.50
24.00	39.00	33.00	39.00	61.00	38.00	11.50
25.00	40.00	34.00	40.00	61.00	38.00	11.50
28.00	43.00	37.00	43.00	62.00	39.00	11.50
30.00	45.00	39.00	45.00	62.00	39.00	11.50
32.00	47.00	42.00	48.00	62.00	39.00	11.50
33.00	48.00	42.00	48.00	62.00	39.00	11.50
35.00	50.00	44.00	50.00	62.00	39.00	11.50
38.00	55.00	49.00	56.00	69.00	41.00	14.00
40.00	57.00	51.00	58.00	70.00	42.00	14.00
43.00	60.00	54.00	61.00	70.00	42.00	14.00
45.00	62.00	56.00	63.00	70.00	42.00	14.00
48.00	65.00	59.00	66.00	70.00	42.00	14.00
50.00	67.00	62.00	70.00	73.00	43.00	15.00
53.00	70.00	65.00	73.00	73.00	43.00	15.00
55.00	72.00	67.00	75.00	73.00	43.00	15.00
58.00	79.00	70.00	78.00	86.00	56.00	15.00
60.00	81.00	72.00	80.00	86.00	56.00	15.00
63.00	84.00	75.00	83.00	85.00	55.00	15.00
65.00	86.00	77.00	85.00	85.00	55.00	15.00
68.00	89.00	81.00	90.00	91.00	55.00	18.00
70.00	91.00	83.00	92.00	92.00	56.00	18.00
75.00	99.00	88.00	97.00	92.00	56.00	18.00

D1	D2	D3	D4	L1	L2	L3
80.00	104.00	95.00	105.00	92.50	56.00	18.20
85.00	109.00	100.00	110.00	92.50	56.00	18.20
90.00	114.00	105.00	115.00	92.50	56.00	18.20
95.00	119.00	110.00	120.00	90.50	56.00	17.20
100.00	124.00	115.00	125.00	90.50	56.00	17.20
105.00	138.00	122.20	134.30	108.00	68.00	20.00
110.00	143.00	128.20	140.30	110.00	70.00	20.00
115.00	148.00	136.20	148.30	110.00	70.00	20.00
120.00	153.00	138.20	150.30	110.00	70.00	20.00
125.00	158.00	142.20	154.30	110.00	70.00	20.00
130.00	163.00	146.20	158.30	110.00	70.00	20.00
135.00	168.00	152.20	164.30	110.00	70.00	20.00
140.00	173.00	156.20	168.30	110.00	70.00	20.00
145.00	178.00	161.20	173.30	110.00	70.00	20.00
150.00	183.00	168.20	180.30	114.00	70.00	22.00
155.00	191.00	173.20	185.30	127.00	79.00	24.00
160.00	196.00	178.20	190.30	127.00	79.00	24.00
165.00	201.00	183.20	195.30	127.00	79.00	24.00
170.00	206.00	188.20	200.30	127.00	79.00	24.00
175.00	211.00	193.20	205.30	127.00	79.00	24.00
180.00	216.00	207.50	219.30	135.00	79.00	28.00
185.00	221.00	212.50	224.30	135.00	79.00	28.00
190.00	226.00	217.50	229.30	135.00	79.00	28.00
195.00	231.00	222.50	234.30	135.00	79.00	28.00
200.00	236.00	227.50	239.30	135.00	79.00	28.00

Note: Additional technical & dimensional information will be provided on request