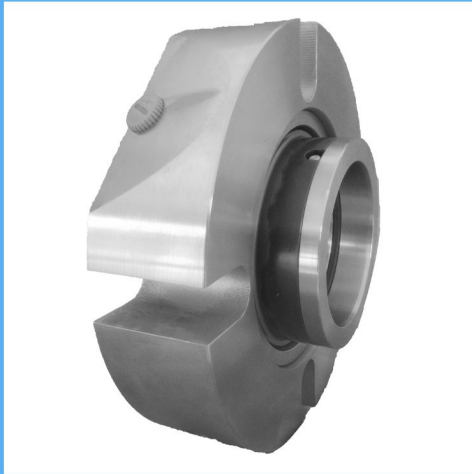


RP50

Cartridge Seals

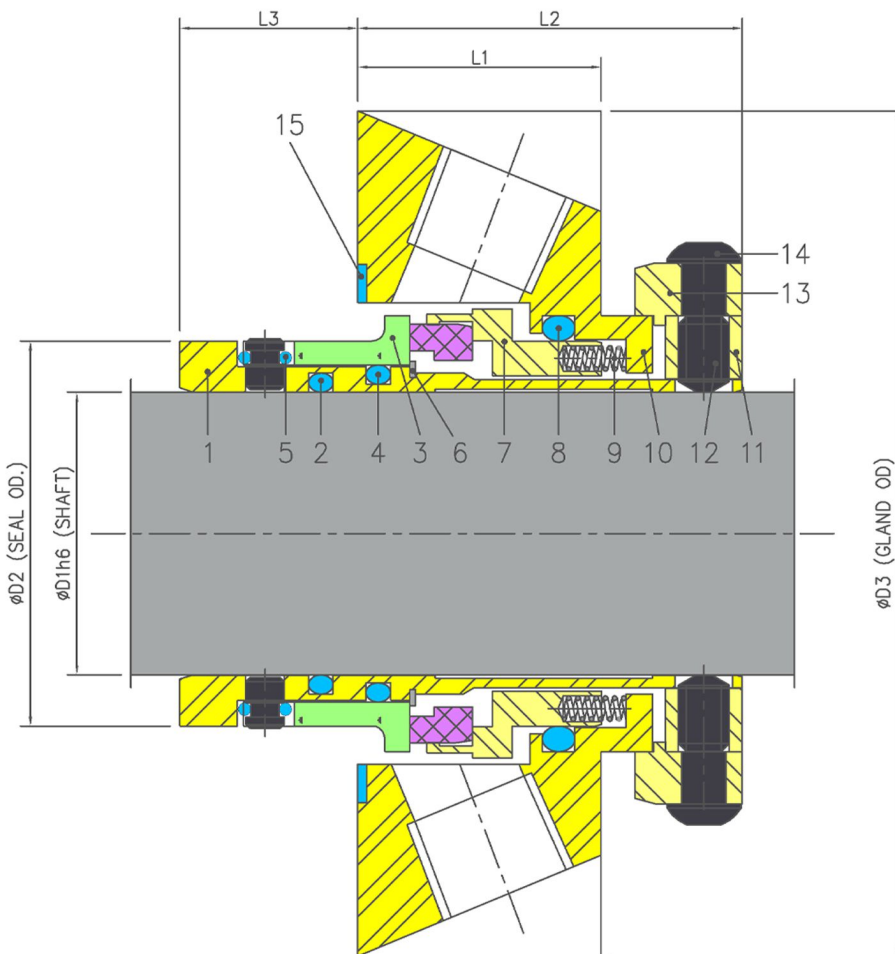


Product Description

1. Single seal configuration
2. Balanced Design
3. Cartridge Design construction
4. Inside mounted
5. Designed to operate without a process bypass or external flush liquid

Technical Features

1. Ideal for use in ANSI process pumps
2. Factory assembled cartridge design for easy installation
3. Hydraulically balanced seal faces
4. Large radial clearances and non-clogging multi spring design



Industrial Application

ANSI process pumps
Mining and mineral ore Industry
Paper and pulp industry
Power generation industry
Textile industry
Water and waste water technology

Material Of Construction

Seal Face: Carbon Graphite Antimony Impregnated/Carbon Graphite Resin Impregnated/Silicon - Carbide/Tungsten - Carbide

Seat : Carbon Graphite Antimony Impregnated Carbon Graphite Resin Impregnated/Silicon - Carbide/Tungsten - Carbide

Elastomer: Viton / Aflas / TTV / EPR

Metal Parts: S.S.316 / Hast'C / Alloy C-276

Note : Other MOC Combinations On Request

Available Sizes

25mm to 100mm (1.000" to 4.000")

Note : Other Sizes On Request

Operating Limits

Pressure = 17 Kg/cm²(MAX)

Temperature = -40°C to 177°C

Speed = 23m/s (75 ft/s)

Permissible axial movement = ± 1.0

Item	Description
1	Sleeve
2,4,8	O ring
3	Mating Ring
5	Thrust washer
6	Circlip
7	SR Shell

Item	Description
9	Spring
10	Drive Collar
11	Set Screw
12	Holding clip
13	Head screw
14	Gasket

Dimensional Data

D1 (Inch)	D2	D3		D4	L1	L2	L3	L4	
1.000	38.10	93.73	-	95.25	58.50	30.10	47.63	50.80	14.50
1.125	41.28	96.90	-	98.43	61.70	30.10	47.63	50.80	14.50
1.250	44.45	106.43	-	107.95	64.90	30.10	47.63	50.80	14.50
1.375	47.63	106.43	-	107.95	68.10	26.80	47.63	50.80	14.50
1.500	53.98	119.13	-	120.65	76.00	30.10	47.63	50.80	14.50
1.625	57.15	119.13	-	120.65	79.20	30.10	47.63	50.80	14.50
1.750	60.33	125.48	-	127.00	80.80	24.26	47.63	50.80	14.50
1.875	63.50	125.48	-	127.00	83.90	30.10	47.63	50.80	14.50
2.000	66.68	128.52	-	130.05	88.90	30.10	47.63	50.80	19.00
2.125	69.85	150.88	-	152.40	92.10	26.80	47.63	50.80	19.00
2.250	73.03	163.58	-	165.10	95.20	30.10	47.63	50.80	19.00
2.375	79.38	160.27	-	161.80	101.60	30.10	50.80	53.85	19.00
2.500	82.55	166.62	-	168.15	104.80	25.40	50.80	53.85	19.00
2.625	85.73	182.63	-	184.15	108.00	30.10	50.80	53.85	22.20
2.750	88.90	195.33	-	196.85	111.10	30.10	50.80	53.85	22.20
2.875	92.08	201.68	-	203.20	114.30	30.10	50.80	53.85	22.20
3.000	95.25	204.72	-	206.25	117.48	30.10	50.80	53.85	22.20
3.125	98.43	208.03	-	209.55	120.70	30.10	50.80	53.85	22.20
3.250	101.60	211.07	-	212.60	123.80	30.10	50.80	53.85	22.20
3.375	104.78	214.38	-	215.90	127.00	30.10	50.80	53.85	22.20
3.500	107.95	217.42	-	218.95	130.20	30.10	50.80	53.85	22.20
3.625	111.13	220.73	-	222.25	133.40	30.10	50.80	53.85	22.20
3.750	114.30	223.77	-	225.30	136.50	30.10	50.80	53.85	22.20
3.875	117.48	227.08	-	228.60	139.70	30.10	50.80	53.85	22.20
4.000	120.65	227.08	-	228.60	142.90	30.10	50.80	53.85	22.20

Note: Additional technical & dimensional information will be provided on request