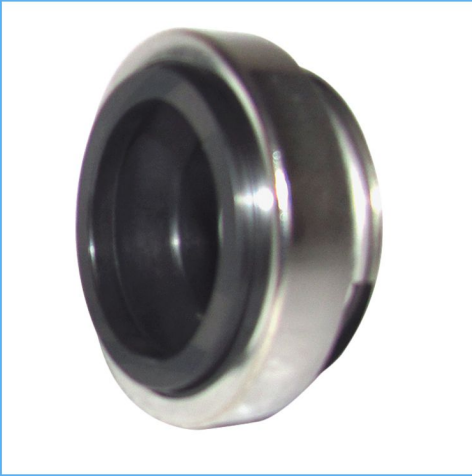


# RB301

## Elastomer Bellows Seals

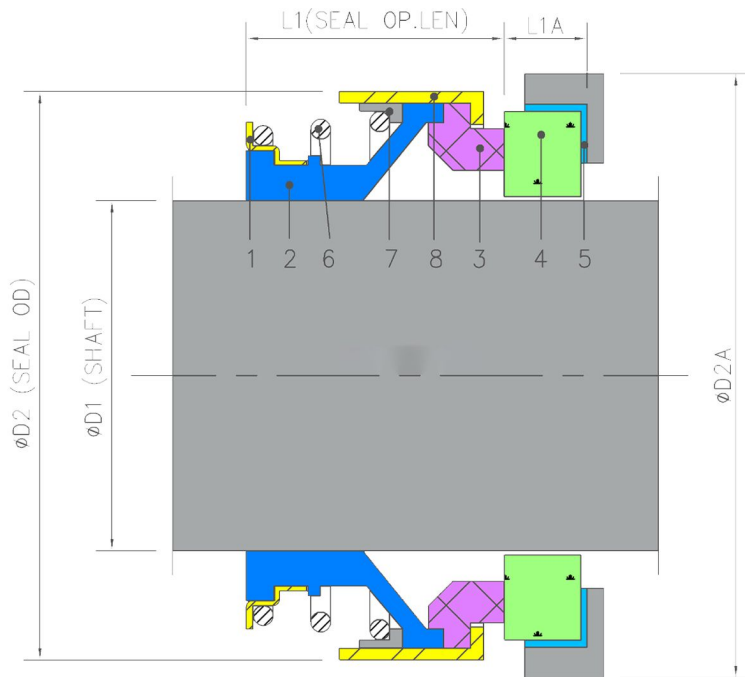


### Product Description

1. Single seal configuration
2. Unbalanced Design
3. For Plain Shafts
4. Rotary Elastomer Bellow Design
5. Independent of Direction of Rotation

### Technical Features

1. Low Cost Seal Solution
2. Suitable for Mild Sterile Applications
3. No Damage to the Shaft
4. Can be employed for Low Solid Content
5. Multifaceted Application usage



Item	Description	Item	Description
1	Spring holder	5	MR Packing
2	Bellow	6	Spring
3	Seal ring	7	Clamp
4	Mating ring	8	Clamp 2

### Industrial Application

Chemical Industries  
 Food Processing Industry  
 Pulp, Paper & Latex  
 Water; Waste water and mild Slurries  
 Chemical Standard Pumps  
 Helical Screw Pumps  
 Submersible Pumps

### Material Of Construction

**Seal Face:** Carbon Graphite Antimony Impregnated/Carbon Graphite Resin Impregnated/Silicon - Carbide/Tungsten - Carbide  
**Seat :** Carbon Graphite Antimony Impregnated Carbon Graphite Resin Impregnated/Silicon - Carbide/Tungsten - Carbide/Ceramic  
**Elastomer:** NBR/Viton  
**Metal Parts:** S.S.316/S.S.304/C

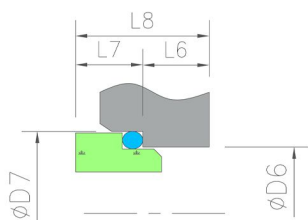
### Available Sizes

6mm to 70mm

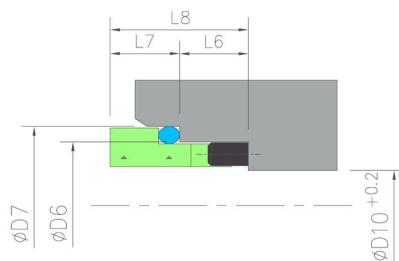
### Operating Limits

**Pressure** = 6kgs/cm<sup>2</sup> (Max)  
**Temperature** = -20° C to + 120°C  
**Speed** = 10m/s  
**Permissible Axial Movement** = ±2.0mm.

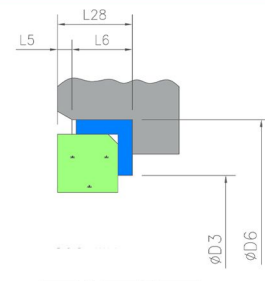
### Stationary Seats



DIN SHORT MR



DIN LONG MR



G60 MR

## Dimensional Data

D1	D2	D2A	L1	L1A
6	18.0	22.0	4.0	8.7
8	18.0	22.0	4.0	8.7
8A	18.0	22.0	4.0	11.2
8B	24.0	26.0	5.5	11.2
8C	24.0	26.0	8.0	11.2
9	24.0	26.0	5.5	11.2
9A	24.0	26.0	8.0	11.2
10	24.0	26.0	5.5	11.2
10A	24.0	26.0	8.0	11.2
11	24.0	26.0	5.5	11.2
11A	24.0	26.0	8.0	11.2
12	24.0	26.0	5.5	13.2
12A	24.0	26.0	8.0	13.2
12B	32.0	29.5	8.0	13.2
12C	32.0	38.0	8.0	13.2
13	24.0	26.0	5.5	13.2
13A	24.0	26.0	8.0	13.2
14	32.0	29.5	8.0	13.2
14A	32.0	38.0	8.0	13.2
14B	35.0	29.5	8.0	13.2
14C	35.0	38.0	8.0	13.2
15	32.0	29.5	8.0	13.2
15A	32.0	38.0	8.0	13.2
15B	35.0	29.5	8.0	13.2
15C	35.0	38.0	8.0	13.2

D1	D2	D2A	L1	L1A
16	32.0	29.5	8.0	13.2
16A	32.0	38.0	8.0	13.2
16B	35.0	29.5	8.0	13.2
16C	35.0	38.0	8.0	13.2
16D	39.0	42.0	8.0	13.2
17	39.0	42.0	8.0	13.2
18	39.0	42.0	8.0	13.2
19	39.0	42.0	8.0	13.2
20	39.0	42.0	8.0	13.2
20A	42.0	45.0	10.0	13.2
22	42.0	45.0	10.0	13.2
24	47.0	50.0	10.0	14.2
25	47.0	50.0	10.0	14.2
28	54.0	57.0	10.0	15.2
30	54.0	57.0	10.0	15.2
32	54.0	57.0	10.0	15.2
35	60.0	63.0	10.0	16.2
38	65.0	68.0	12.0	18.2
40	65.0	68.0	12.0	18.2
45	70.0	73.0	12.0	20.2
50	85.0	88.0	15.0	23.2
55	85.0	88.0	15.0	23.2
60	105.0	110.0	15.0	30.2
65	105.0	110.0	15.0	30.2
70	105.0	110.0	15.0	32.2

**Note: Additional technical & dimensional information will be provided on request**