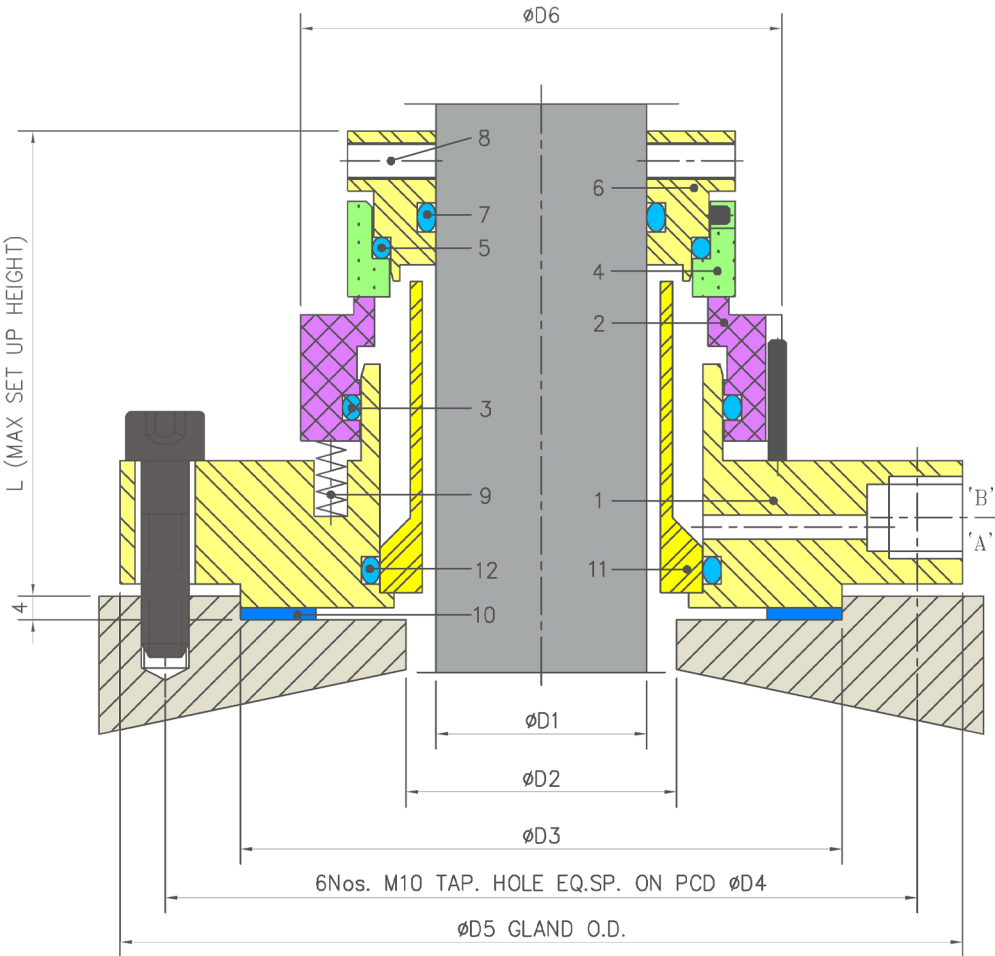


Product Description

- 1. Outside mounted
- 2. Single seal design
- 3. Side Entrt/Top entry Agitator seal

Technical Features

- 1. Dry running Contacting seal
- 2. Can Rundry at high RPM
- 3. Stationary springs design



Industrial Application

Chemical industries
Pharmaceutical industries
Blower /PG Plant

Material Of Construction

Seal Face :Carbon Graphite Antimony Impregnated / Carbon
Graphite Resin Impregnated / Silicon Carbide / Glass Filled Teflon
Seat: Carbon Graphite Antimony Impregnated / Carbon Graphite Resin Impregnated / Silicon-Carbide/ Tungsten-Carbide/Ceramic
Elastomer: Viton/Aflas/TTV/EPDM/KALREZ
Metal Parts: S.S.316 / Hast'C
Note : Other MOC Combinations On Request

Available Sizes

25mm to 110mm (1.000" to 4.500")
Note : Other Sizes On Request

Operating Limits

Pressure = Full vacuum to 15 Kg/cm2 (MAX)
Temperature = 150°c (max)
Speed = 2400rpm
Permissible axial movement = ± 1.0 mm

| Item | Description |
|----------|---------------|
| 1 | Gland Plate |
| 2 | Seal ring |
| 3,5,7,12 | O-ring |
| 4 | Mating ring |
| 6 | Drive Collar |
| 8 | Soc.set screw |

| Item | Description |
|------|-------------------|
| 9 | Spring |
| 10 | Gland gasket |
| 11 | Debri collectiont |