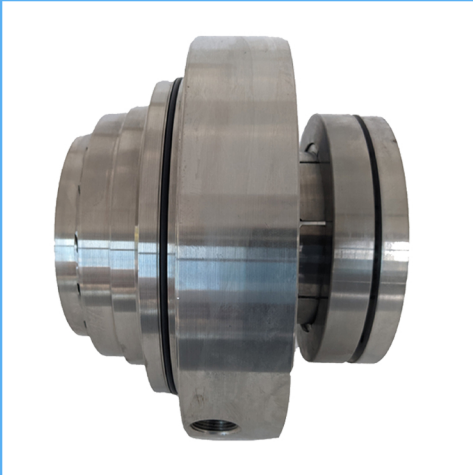


RBFP (BOILER FEED PUMP)

Engineered Mechanical Seals



Product Description

1. Single seal configuration
2. Balanced design
3. Cartridge construction
4. Stationary design with multiple springs
5. Designed with integrated pumping device for increased efficiency in circulation
6. Robust construction with shrink-fitted seal face
8. Heavy duty design of solid stationary seat

Technical Features

1. Accommodates shaft deflections due to stationary design
2. Can be designed for individual pump application with corresponding connection parts to be adapted to the pump seal chamber
3. Optimum heat dissipation due to integrated pumping device available for increased efficiency in circulation and optimized seat design
4. Cartridge unit factory assembled for easy installation, which reduces downtime
5. Trouble-free long-term operation due to heavy duty single seat design with bandage
6. Can operate under high sliding velocities and medium pressures

Industrial Application

Boiler feed water pumps
Power plant technology

Material Of Construction

Seal Face: Carbon Graphite Antimony Impregnated/Carbon Graphite Resin Impregnated/Silicon -Carbide/Tungsten -Carbide

Seat : Carbon Graphite Antimony Impregnated Carbon Graphite Resin Impregnated/Silicon -Carbide/Tungsten -Carbide

Elastomer: Viton

Metal Parts: S.S.316 / Hast'C

Note : Other MOC Combinations On Request

Available Sizes

Up to 250mm
Other sizes on request

Operating Limits

Pressure = 50 Kg/cm²

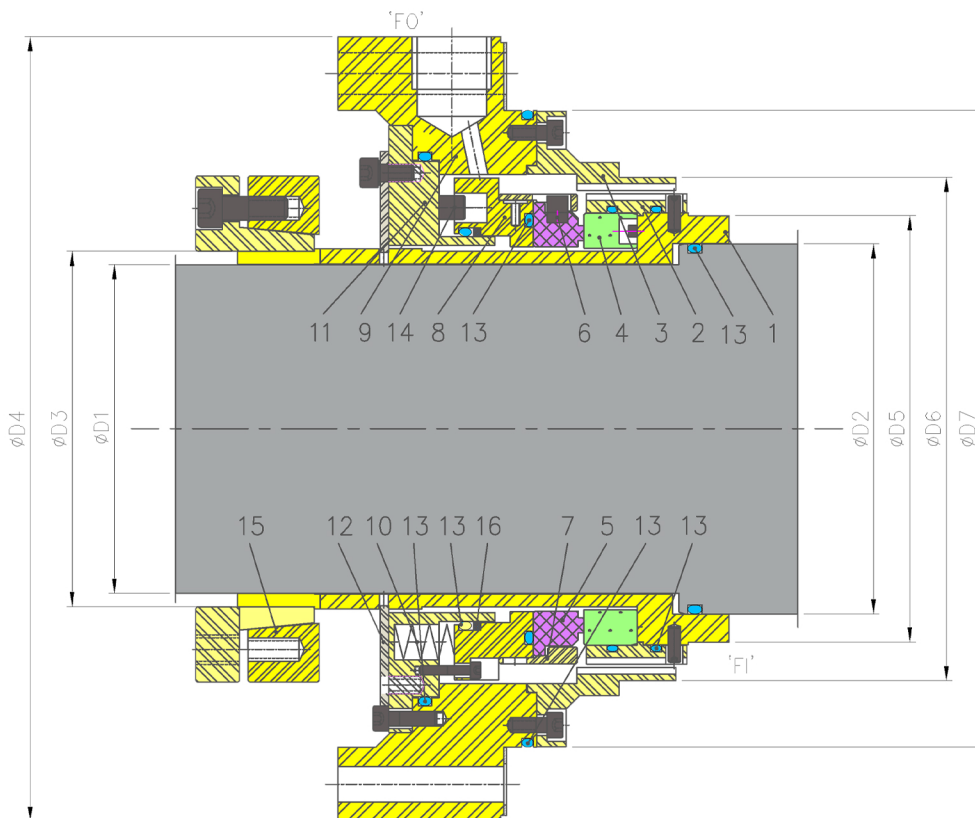
Temperature = 300°C Max

Speed = 60m/s

Permissible axial movement = ±3.00mm

Suitable for Pump Models

Can be designed to suit all Boiler Feed Pump Models of BHEL/Weir, KSB and Sulzer.



Item	Description
1	Sleeve
2	Pumping ring
3	Outer gland plate
4	Mating ring
5	Seal ring
6,14	Pin

Item	Description
7	Lock Plate
8	Holder
9	Gland plate
10	Spring
11	Bottom plate
12	Sliding washer
13	O ring
15	Shirnk disk
16	Back up ring