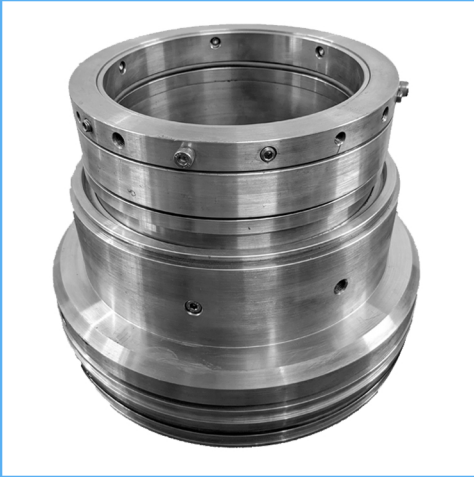


RSAF (CD Filter)

Engineered Mechanical Seals



Product Description

1. Double seal configuration.
2. Balanced Design
3. Cartridge Design construction
4. Equipment Specific Design

Technical Features

1. Heat Shrunk faces
2. Stationary set of springs which are out of contact prevent clogging
3. Milled anti-rotation slots prevent rolling of the body ring that protects the seal face. This eliminates tension peaks that would distort or break the seal face.
4. Special double-balanced design allows the use of both pressurised and unpressurised seal water.

Industrial Application

Paper and pulp industries
This seal is typically used in CD Filter

Material Of Construction

Seal Face: Carbon Graphite Antimony Impregnated/Carbon Graphite Resin Impregnated/Silicon - Carbide/Tungsten - Carbide
Seat : Carbon Graphite Antimony Impregnated/Carbon Graphite Resin Impregnated/Silicon - Carbide/Tungsten -Carbide
Elastomer: Viton / Aflas / TTV / EPRM
Metal Parts: S.S.316 / Hast'C / Alloy C-276
 Note : Other MOC Combinations On Request

Available Sizes

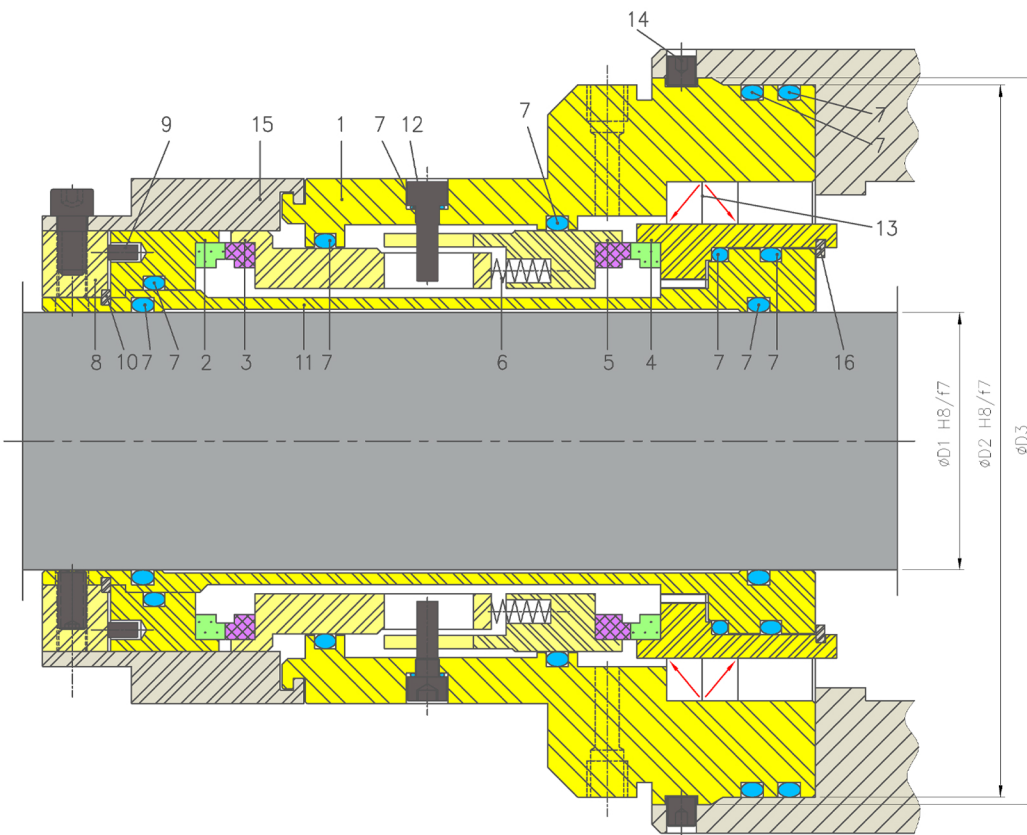
130mm, 140mm, 155mm, 170mm, 200mm, 220mm & 270mm

Operating Limits

Pressure = 15 Kg/cm²)
Temperature = 180°C Max
Speed = 20m/s
Permissible axial movement = ±2.00mm

Suitable for equipment Models

CD Filters of make Andritz & Wenrui



Item	Description
1	Seal Housing
2,4	Mating ring IB&OB
3,5	Seal ring IB&OB
6	Spring
7	O ring
8	Drive Collar

Item	Description
9	Drive pin
10,16	Retaining ring
11	Sleeve
12	Drive screw
13	Oil Seal
14	Set Screw
15	Assly lock