

### Product Description

1. Double seal configuration.
2. Balanced Design
3. Cartridge Design construction
4. Equipment Specific Design

### Technical Features

1. Stationary set of springs which are out of contact prevent clogging
2. Special double-balanced design allows the use of both pressurised and unpressurised seal water.
3. Drive is taken from the Impeller of the Screen.

### Industrial Application

Paper and pulp industries  
This seal is typically used in Pressure Screens and Pressure Thickeners

### Material Of Construction

**Seal Face:** Carbon Graphite Antimony Impregnated/Carbon Graphite Resin Impregnated/Silicon - Carbide/Tungsten - Carbide

**Seat :** Carbon Graphite Antimony Impregnated Carbon Graphite Resin Impregnated/Silicon - Carbide/Tungsten -Carbide

**Elastomer:** Viton / Aflas / TTV / EPRM

**Metal Parts:** S.S.316 / Hast'C / Alloy C-276

**Note :** Other MOC Combinations On Request

### Available Sizes

70mm,80 mm,95 mm,110 mm,  
130 mm & 150 mm

### Operating Limits

**Pressure** = 15 Kg/cm<sup>2</sup>)

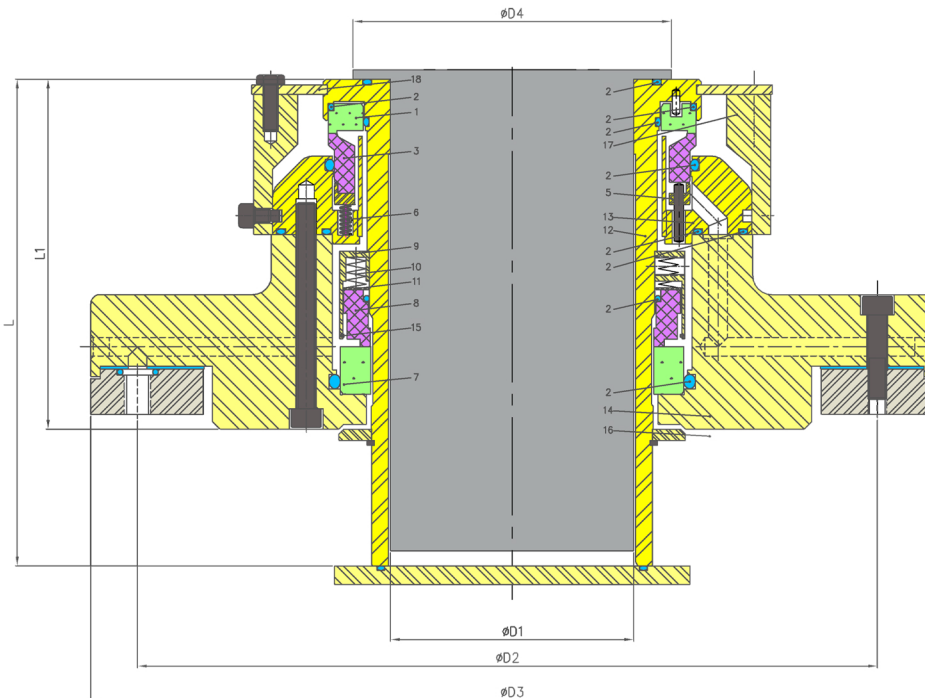
**Temperature** = 180°C Max

**Speed** = 20m/s

**Permissible axial movement** = ±2.00mm

### Suitable for equipment Models

Voith Pressure Screening Equipment



Item	Description
1,7	Mating ring
2	O ring
3,8	Seal ring IB&OB
5	Thrust ring
6,10	Spring
9	Cup

Item	Description
11	Thrust washer
12	Sleeve
13	Housing
14	Gland plate
15	Circlip
16	Restriction bush
17	Supporting ring
18	Sliding washer