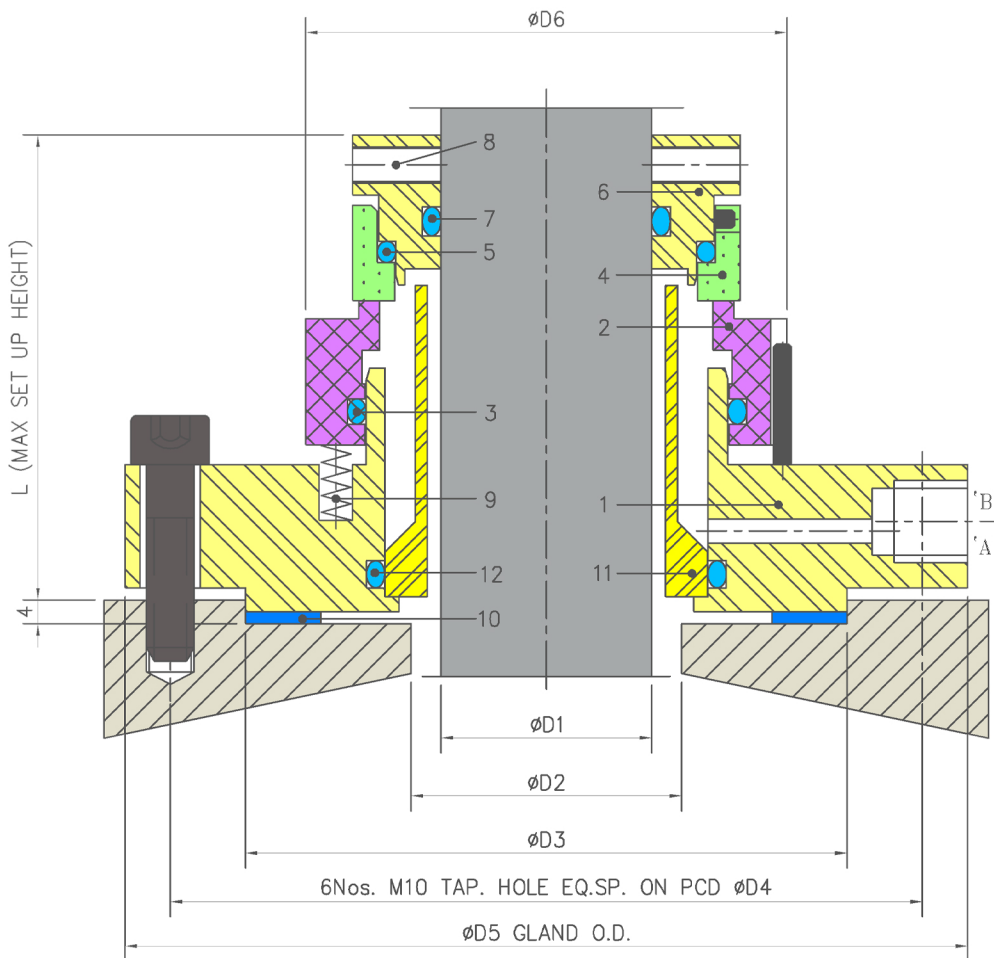


Product Description

1. Outside mounted
2. Single seal design
3. Side Entrt/Top entry Agitator seal

Technical Features

1. Dry running Contacting seal
2. Can Rundry at high RPM
3. Stationary springs design



Industrial Application

Chemical industries
Pharmaceutical industries
Blower /PG Plant

Material Of Construction

Seal Face :Carbon Graphite Antimony Impregnated / Carbon
Graphite Resin Impregnated / Silicon Carbide / Glass Filled Teflon

Seat: Carbon Graphite Antimony Impregnated / Carbon Graphite Resin Impregnated / Silicon-Carbide/ Tungsten-Carbide/Ceramic

Elastomer: Viton/Aflas/TTV/EPDM/KALREZ

Metal Parts: S.S.316 / Hast'C

Note : Other MOC Combinations On Request

Available Sizes

25mm to 110mm (1.000" to 4.500")

Note : Other Sizes On Request

Operating Limits

Pressure = Full vacuum to 15 Kg/cm² (MAX)

Temperature = 150°C (max)

Speed = 2400rpm

Permissible axial movement = ± 1.0 mm

| Item | Description |
|----------|---------------|
| 1 | Gland Plate |
| 2 | Seal ring |
| 3,5,7,12 | O-ring |
| 4 | Mating ring |
| 6 | Drive Collar |
| 8 | Soc.set screw |

| Item | Description |
|------|-------------------|
| 9 | Spring |
| 10 | Gland gasket |
| 11 | Debri collectiонт |