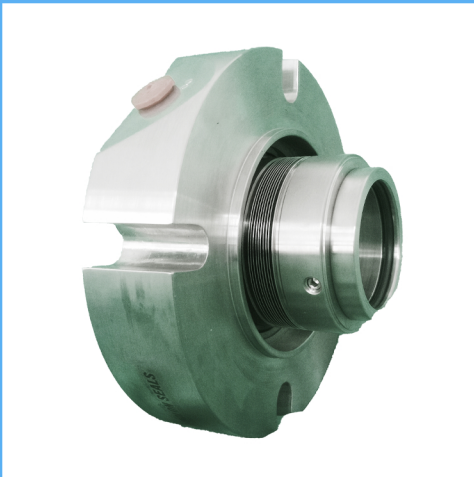


RMBC Single Seals

Cartridge Seals

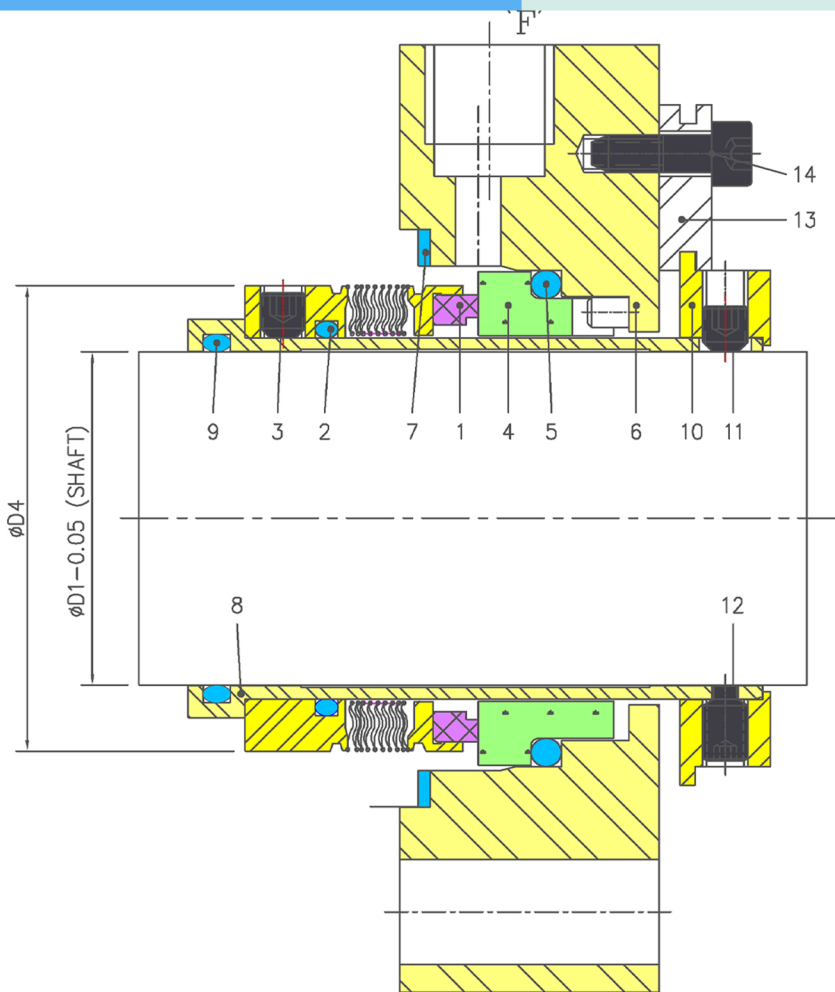


Product Description

1. Used for unstopped
2. Singel seal balanced Design
3. Independent of Direction of Rotation.
4. Cartridge Design construction
5. Metal bellows

Technical Features

1. Suitable for extreme temperature ranges
2. No dynamically loaded O-ring
3. Self cleaning effect
4. Short installation length is possible
5. Pumping screw for highly viscous media available.



Industrial Application

- Refining Industries
- Power plant industries
- Chemical industry
- Hot media
- Cold media
- High viscous media
- Pumps
- Special rotating equipments

Material Of Construction

- Seal Face:** Carbon Graphite Antimony Impregnated/Carbon Graphite Resin Impregnated/Silicon - Carbide/Tungsten - Carbide
- Seat :** Carbon Graphite Antimony Impregnated/Carbon Graphite Resin Impregnated/Silicon - Carbide/Tungsten - Carbide
- Elastomer:** Viton / Aflas /EPDM/KALREZ
- Metal Parts:** S.S.316/Hast'C

Available Sizes

22mm to 75mm (0.875" to 3.000")

Operating Limits

- Pressure** = 25 Kg/cm² (MAX)
- Temperature** = -40°C to 220°C
- Speed** = 20 m/s
- Permissible axial movement** = d upto 100mm = ± 1.0 mm

Item	Description
1	Bellow assly
2,5,9	O ring
3,11	Socket set screw
4	Mating Ring
6	Gland plate
7	Gasket

Item	Description
8	Sleeve
10	Drive Collar
12	Dog point set screw
13	Sliding washer
14	Socket Cap Screw