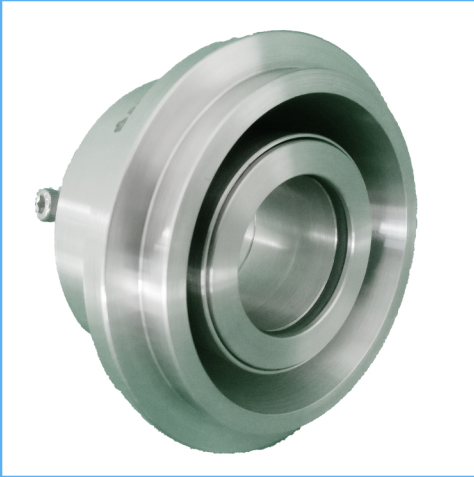


RCSS Screw Pump

Cartridge Seals

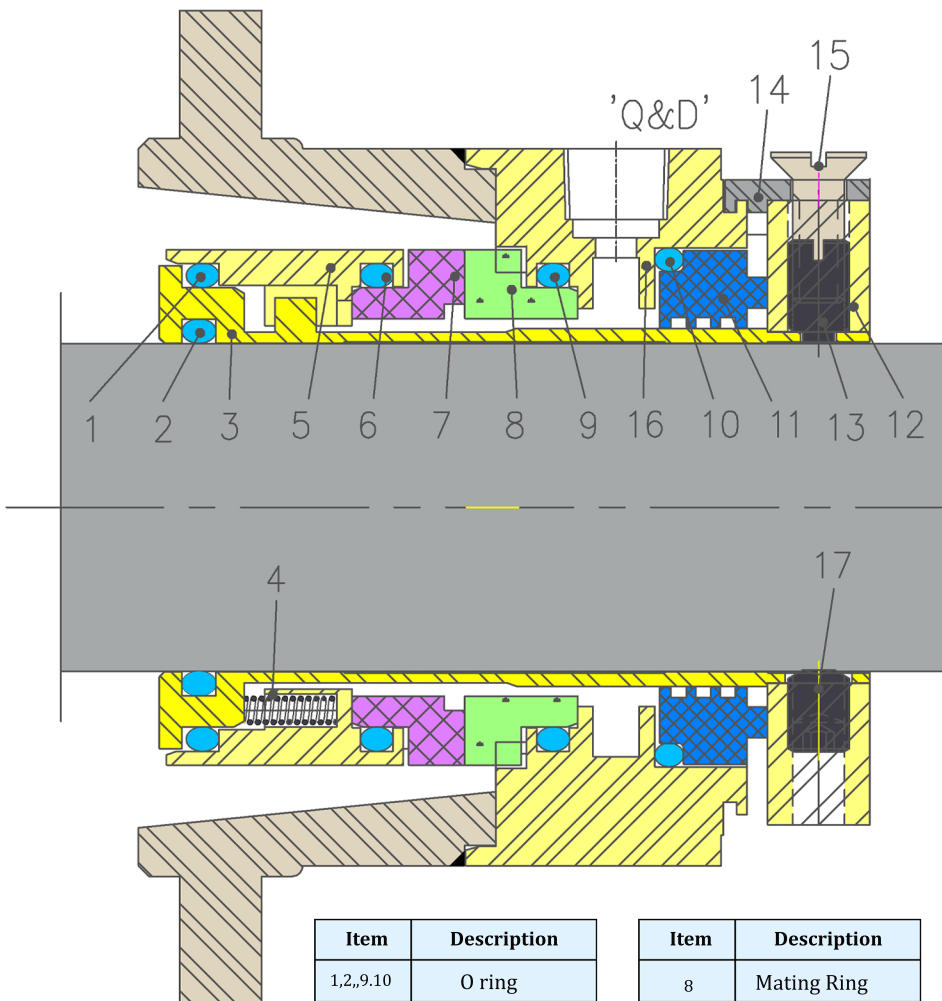


Product Description

1. Single seal configuration
2. Balanced Design
3. Independent of Direction of Rotation.
4. Cartridge Design construction
5. Inside Mounted
6. Multi Spring rotation
7. Designed for screw Pumps

Technical Features

1. Ideal for use in process pumps standardization
2. Cartridge unit factory assembled for easy installation
3. Rugged design for long operating life
4. Ideal to convert and retrofit pumps with packing and large OEM production.



| Item | Description |
|----------|-----------------|
| 1,2,9,10 | O ring |
| 3 | Sleeve |
| 4 | Spring |
| 5 | Seal ring shell |
| 6 | O ring |
| 7 | Seal ring |

| Item | Description |
|------|---------------------|
| 8 | Mating Ring |
| 11 | Restriction bush |
| 12 | Drive Collar |
| 13 | Dog point Screw |
| 14 | Holding clip |
| 15 | Socket HD Screw |
| 16 | Dog point Screw |
| 17 | Socket set pt screw |

Industrial Application

Food stuff and animal feed industries
 Sweet cider pressing and beverage production
 Viticulture and wineries
 Spirit production and alcohol industry
 Breweries and malt houses
 Sugar industries
 Pharmaceuticals and cosmetics industry
 Oil and gas industries

Material Of Construction

Seal Face: Carbon Graphite Antimony Impregnated/Carbon Graphite Resin Impregnated/Silicon Carbide/Tungsten - Carbide
Seat : Carbon Graphite Antimony Impregnated/Carbon Graphite Resin Impregnated/Silicon Carbide/Tungsten - Carbide
Elastomer: Viton / Aflas/TTV/EPDM/KALREZ Perfluorocarbon rubber/PTFE
Metal Parts: S.S.316/Hast'C

Note : Other MOC Combinations On Request

Available Sizes

25mm to 100mm (1.000" to 4.000")

Note : Other Sizes On Request

Operating Limits

Pressure = 25 Kg/cm2(MAX)

Temperature = -40°C to 220°C

Speed = 16m/s

Permissible axial movement =

d1 upto 100mm = ±0.5mm

d1 upto 100mm = ±2.0mm