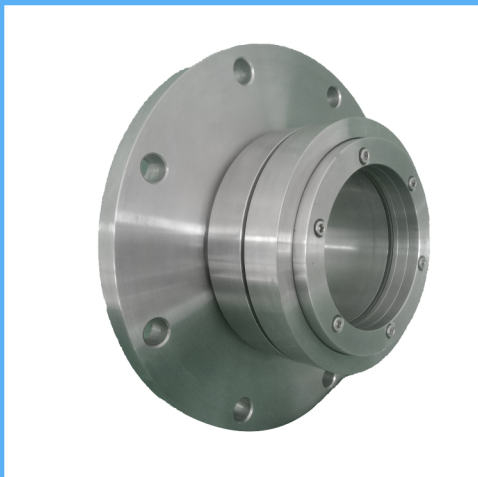


RSAB(Side entry Agiator) Engineered Mechanical Seals

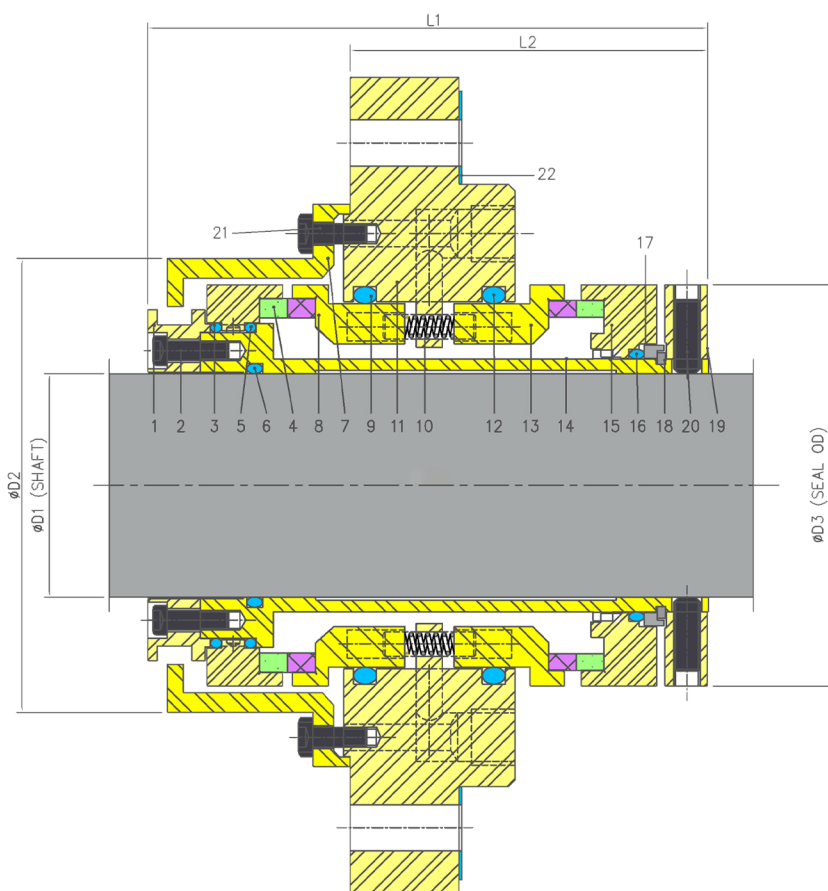


Product Description

1. Double seal configuration.
2. Balanced Design
3. Cartridge Design construction
4. Used in applications where limited space is available

Technical Features

1. Heat Shrunk faces
2. Stationary set of springs which are out of contact prevent clogging
3. Milled anti-rotation slots prevent rolling of the body ring that protects the seal face. This eliminates tension peaks that would distort or break the seal face.
4. Special double-balanced design allows the use of both pressurised and unpressurised seal water.
5. Special double-balanced design allows the use of both pressurised and unpressurised seal water



Industrial Application

Sewage industries
Paper and pulp industries
Mining industries
Water and waste water technology
Food and beverage industries

Material Of Construction

Seal Face: Carbon Graphite Antimony Impregnated/Carbon Graphite Resin Impregnated/Silicon - Carbide/Tungsten - Carbide

Seat : Carbon Graphite Antimony Impregnated/Carbon Graphite Resin Impregnated/Silicon - Carbide/Tungsten - Carbide

Elastomer: Viton / Aflas / TTV / EPDM

Metal Parts: S.S.316 / Hast'C / Alloy C-276
Note : Other MOC Combinations On Request

Available Sizes

50mm to 200mm

Operating Limits

Pressure = 15 Kg/cm²

Temperature = 180°C Max

Speed = 20m/s

Permissible axial movement = ±2.00mm

Suitable for equipment Models

Side entry Agitators & Eccentric Screw Pumps

Item	Description
1	Sleeve collar
2,21	Soc Hd screw
3,5,6,9,12	O ring
4,15	Mating ring
7	Cover plate
8,13	Seal Ring IB&OB

Item	Description
10	Spring
11	Gland plate
14	Sleeve
17	Retaining ring
18	Circlip
19	Drive Collar
20	Soc.set screw
22	Gasket