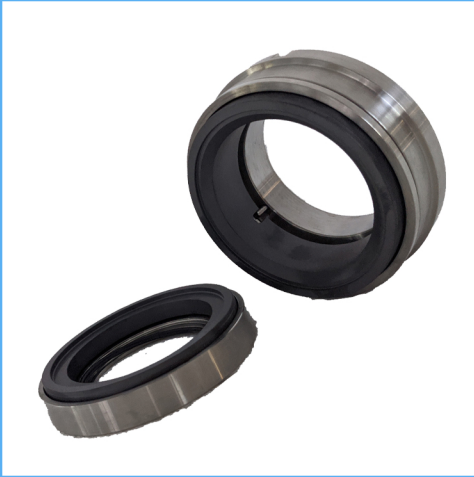


RJC587

Engineered Mechanical Seals

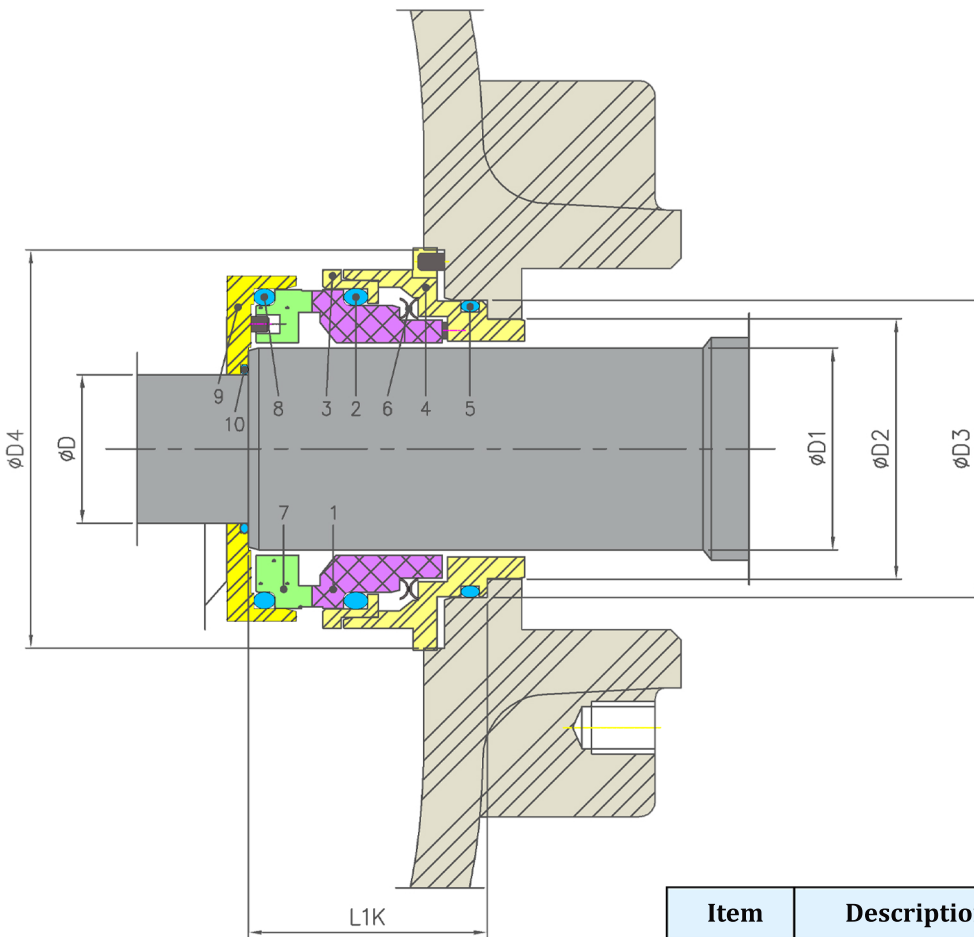


Product Description

1. Single seal configuration
2. Balanced Design
3. Semi-Cartridge Design construction
4. Used in applications where limited space is available

Technical Features

1. Solid faces are used
2. Stationary set of springs which are out of contact prevent clogging
3. Wave Spring is used which takes less space and prevents clogging.
4. Designed to suit Andritz S Model Pumps
5. Stationary face takes drive from impeller



Industrial Application

Paper and pulp industries
Used in Paper Machine section.

Material Of Construction

Seal Face: Carbon Graphite Antimony Impregnated/Carbon Graphite Resin Impregnated/Silicon -Carbide/Tungsten -Carbide

Seat : Carbon Graphite Antimony Impregnated Carbon Graphite Resin Impregnated/Silicon -Carbide/Tungsten -Carbide

Elastomer: Viton / Aflas / TTV / EPRM

Metal Parts: S.S.316 / Hast'C / Alloy C-276

Note : Other MOC Combinations On Request

Available Sizes

38mm,48mm,53mm,65mm & 90mm

Operating Limits

Pressure = 15 Kg/cm²)

Temperature = 120°C Max

Speed = 20m/s

Permissible axial movement = ±2.00mm

Suitable for Pump Models

Suitable for Andritz S Model Pumps Series.

Item	Description
1	Seal ring
2,5,8,10	O ring
3	Thurst ring
4	SR holder
6	Wave Spring
7	Mating ring
9	MR holder